



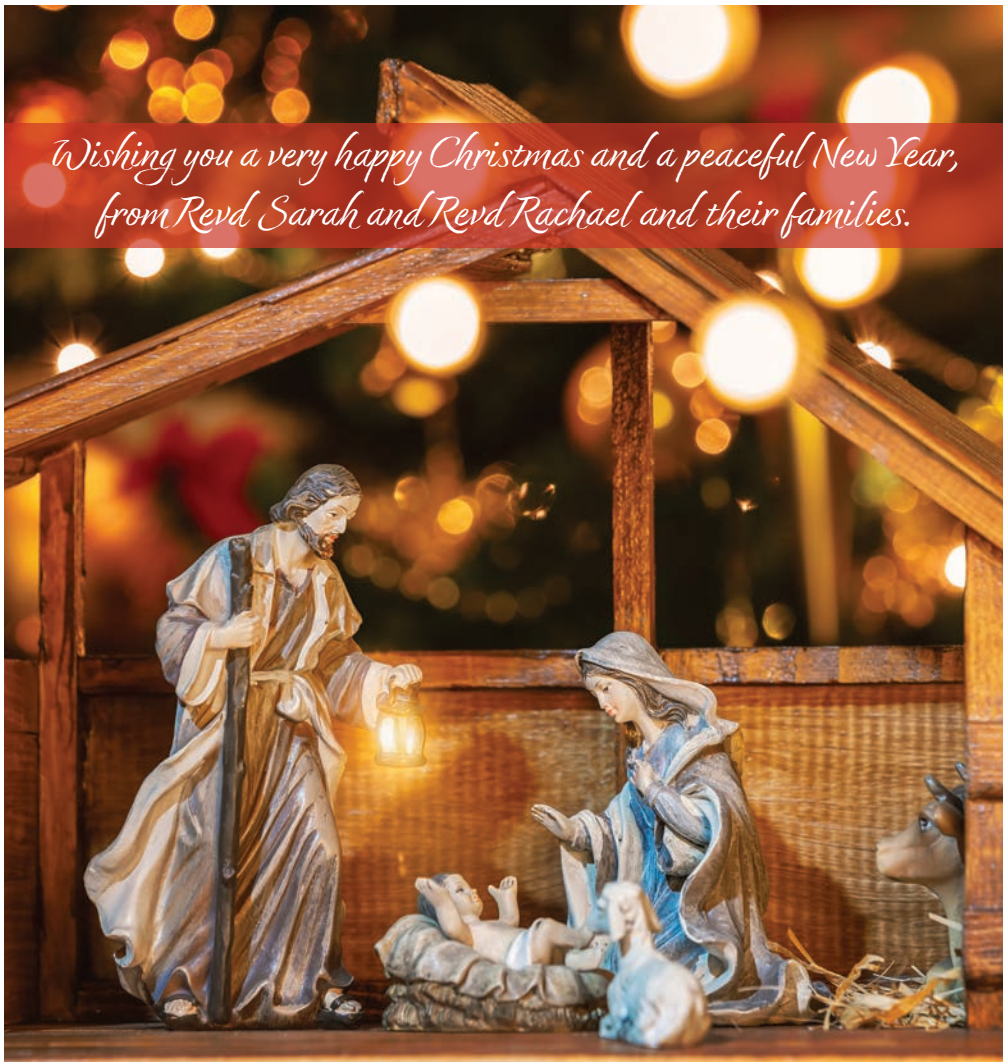
St. Edmund's Church

£1.00

# News from the Parish

December 2025 / January 2026

*Wishing you a very happy Christmas and a peaceful New Year,  
from Revd Sarah and Revd Rachael and their families.*



[www.stedmundsallestreeandstmatthewsdarleyabbey.co.uk](http://www.stedmundsallestreeandstmatthewsdarleyabbey.co.uk)

[www.facebook.com/stedmundsallestree](https://www.facebook.com/stedmundsallestree)

# St. Edmund's - December 2025/January 2026

While COVID has diminished in terms of its impact on us as a nation, we recognise that there will be some people who have still to be careful because they are vulnerable. If you feel you need to wear a mask, we encourage you to do so. We also gently request that if you are unwell, especially if you have COVID, you stay away to avoid infecting anyone who might be vulnerable.

For communion, normal practice has resumed regarding going to and from the rail. Please follow any directions given by the day's welcomers. At the rail you will be given three options regarding bread and wine. You may either indicate - by nodding your head - that you wish the wafer to be intincted for you by the person carrying the special intincting chalice, or you may accept the wafer only and then drink from the chalice brought after by the server. Or you may choose to just have the wafer.

There are halved grapes available for children at the rail so they join in this special feast, they will be given a prayer of blessing as normal. And if you do not feel communion is appropriate for you we encourage you to come to the rail, leaving your hands by your sides, so that we may pray a prayer of blessing over you.

Please stay for coffee or tea in the Church Hall after the service, it's a great opportunity to get to know new friends and to catch up with old ones.

FOOD BANK - The first Sunday of the month, 7th December 2025 and 4th January 2026. Please leave your donations in St Edmund's Church or St Matthew's Fellowship Room by Tuesday 9th December, and 6th January.

---

FRONT COVER: Christmas Greetings from Reverends Rachael and Sarah.

BACK COVER: St Edmund's Choir acknowledge Mary Pollett's 50 years in the choir.  
The War Memorial at the St Edmund's Remembrance Sunday Service, 9th November 2025.

**This magazine's colour cover has been sponsored by Terry Pool in memory of Hazel who, you may recall, passed away on Christmas morning, 2014.**

**If you would like to sponsor a month's colour cover please contact one of the editorial team or a Churchwarden. The cost is £35.00.**

---

**Open All Year:** St Ed's and St Matt's are open regularly throughout the spring and summer months. Do pop in for some peace and space, and invite others to do the same. If you are there and people come in, please make them welcome.

---

## Safeguarding Initiative

We have a strong Safeguarding Initiative here at St Edmund's Church. Full details can be found on page 10, on the Church noticeboards and on our NEW website [www.stedmundsallestreeandstmatthewsdarleyabbey.co.uk](http://www.stedmundsallestreeandstmatthewsdarleyabbey.co.uk)

# The Revd Sarah Writes

## Beating the Bounds in Prayer

As autumn settles in—with leaves falling, temperatures dropping, and daylight fading—I find myself reflecting on the summer. One standout memory was joining Mid Derbyshire MP Jonathan Davies on the final day of his walk across the constituency. We met for coffee at the Little Shed and walked together through Allestree Park, then across the fields between Allestree and Quarndon, and into Markeaton Park for a well-earned cuppa.



During our walk we spoke about many things, including how Jonathan's journey echoed the ancient tradition of *beating the bounds*. I later read a little more about this medieval practice which involved clergy, parishioners, and local dignitaries walking the boundaries of their parish once a year, tapping boundary markers like gates, walls, or trees with sticks. It was a way to reaffirm parish borders and pass on local knowledge—especially in times before maps were common.

Though the tradition waned after the Reformation and was banned by Oliver Cromwell, it saw a revival in Victorian times. Today it has largely faded from practice. While I don't foresee us reinstating it literally, the experience of walking through our parishes offered a fresh perspective—seeing familiar places anew and reflecting on our shared community and how God has brought us together as a group of four parishes to seek God's blessing upon our community, to seek its good and to share the good news of Jesus Christ.

This walk reminded me of our own spiritual version of “beating the bounds”: our community prayer initiative. We may not be marking territory, but we are intentionally praying for every street and household across our four parishes. It's a way of seeking God's blessing—not in a territorial sense, but in the spirit of the diocesan vision that *the Kingdom of God is good news for all*. Who knows what God might do as we join together in prayer for the people parishes of St Edmund, St Matthew, St Nicholas and St Paul who are known and deeply loved by God.

*Revd Sarah Watson*  
Lead Minister, St Edmund's & St Matthew's





# Churchwardens' View

A Regular Update by Ann Miller and Paul Smith

## Time for Change

Paul writes: Everyone can see the blue clock faces on the West and South sides of our church tower, but few get to see the wonderful mechanism behind that drives the hands and strikes the hours.

Built in 1853 by Whitehurst of Derby, the clock is housed within a glazed timber cabinet with a lead sheet cover. Several clockmakers who have worked on the clock have commented that this enclosure is a major factor in protecting it from damaging stone dust and other debris, thus keeping it in excellent condition. Interesting fact: in the clock mechanism, the gearing divides each minute into 50 (not 60 seconds as you might expect). This is because the “tick” is 1.2 seconds.  $1.2 \times 50 = 60!$

The clock has an automatic winding mechanism which was installed in 1996 by Smiths of Derby. Before this, the clock was hand wound. A plaque on the clock casing pays tribute to David Robotham who kept fit by regularly climbing the spiral tower staircase to wind up the weights.

There are actually two winding units (autowinders). One winds the clock itself (“the going”), the other winds the mechanism that sounds the hours (“the striking”).

You may have noticed that the clock itself is running normally but the striking of the hours has not worked since August 2025. This is because the autowinder on the striking side has failed – not surprising given that it’s almost 30 years old.

Smith’s have advised us that it cannot be economically repaired. As a result, our trustees (the PCC) are now looking at replacing both these autowinders. This will hopefully give both sides of the clock a new lease of life. We need to choose between a mechanical device that’s an updated version of what we already have, and a newer computer-operated winder.

This second mechanism offers the advantage of being self-regulating: it will automatically keep the clock on time using a signal transmitted from the National Physical Laboratory. On the other hand, some have queried whether anything that’s computer-driven will have the 30-year lifespan we’ve had with the existing units. Interestingly, the costs of the two systems work out almost the same at just under £7,000 plus VAT. To be continued...!



# Churchwardens' View continued

## **And Changing Times:**

Ann writes: One of the great things about St Ed's is variety. We still have and cherish the privilege of a robed choir singing regularly at many of our services. At the 23rd November Patronal Festal Evensong celebrating St Edmund, we enjoyed the exciting sounds of the combined choirs of St Ed's and St Matt's. Many thanks to all. This regular combining of the choirs issues mainly from St Ed's and St Matt's both embracing changing times many years ago, when necessity strengthened links between the two churches.

During this year we've been evolving and embracing changing times and development in other ways.

Messy Church is a new development and an example of changing times for us. The hall on 15th November afternoon was buzzing and vibrant with children and their families enjoying craft activities, story and singing time, tea and delicious cake.

All Age Worship (first Sunday of the month) has also taken off during this year. Truly admirable acting skills of our members and clergy have become apparent. Who knew? They not only give us great entertainment thoroughly enjoyed by all ages, but also of course much deeper underlying messages.

Back to Time: the clock has autowinders, but we don't! There isn't one for the smooth running of services: setting up, welcoming people as they arrive, reading the lessons, leading the prayers. There's no autowinder for looking after church finances; ensuring safeguarding is as it should be; arranging flowers; serving coffee; providing refreshments for special occasions; doing endless jobs around the church and hall; keeping the grounds and gardens in good order; and taking responsible decisions for St Ed's future...

The list really is endless and we very much appreciate The Team making things happen, regularly clocking on to keep St Ed's going. The Team, in turn, always welcomes more help to spread the load. Give us a hand and keep us ticking together for longer!

## **Graveyard Safety Check**

Derby City Council, who maintain our churchyard, carried out a safety check in August 2025 to ensure that all gravestones and other memorials are stable and secure. These checks are now mandatory as, tragically, a number of people nationally have been killed or injured after insecure memorials fell onto them.

The Council has given us a list of memorials which require action: prime responsibility for their safety normally lies with the family of the person named on the memorial. So, if you have a family member buried at St Ed's, please check the notices we've put up in the church porch and on noticeboards around the churchyard. If you own one of the memorials mentioned as needing work, please contact one of us so that we can let you know what options are open to you. Our contact numbers are given in the directory section of this magazine.

*Ann & Paul*  
Churchwardens

## Vacancy: St Edmund's Church Warden

**IMPORTANT: Paul Smith will stand down as a churchwarden at the 2026 Annual Meeting after four years in-post. Please pray with us that someone suitable will feel called to take on this vital and fulfilling role. If anyone would like to find out more about what it involves, please speak to either of us on a no-obligation basis.**

Wardens are PCC members and church trustees ex-officio (= by virtue of their role). Our main functions are to support the clergy's ministry, represent the church members, and to be responsible for the church's buildings and property.

## From the Registers of St Edmund's Church

BAPTISMS & WEDDINGS: None since the end of September

FUNERAL

30th Oct

Funeral of Marion Carnell

BURIAL OF ASHES

29th Oct

Burial of ashes of Vera May Fowler

---

## Allestree History Group: December Meeting

The group will meet only once this month at 7.00pm on the first Wednesday, 3rd December 2025 in the Choir Vestry at St Nicholas' Church, Allestree Lane, Allestree, Derby DE22 2DS. This meeting is the A.G.M and 'Quiz & Buffet' - please bring food or bottle to share, plus a glass. If you would like to know more about the Allestree History Group you can telephone Sylvia on 01332 556441 or visit [www.allestreelocalhistorygroup.org.uk](http://www.allestreelocalhistorygroup.org.uk)

---

## "Christmas Greeting"

I stood on the hillside and watched for a moment. I didn't want to startle her, or frighten her away. She was young, I noted, and had graceful movements. She walked towards a small house and went inside. I waited. Surely she would appear again soon?

From my position on the hill I could see a side door, and after a moment it opened. The young woman stepped out, settled herself on a stool and began trimming the lamps that lay in a basket at her feet. She looked happy, calm, serene. This was my moment.

I moved quickly, and stood a little way from her, but she noticed my presence and looked up, giving me a small uncertain, but not unwelcoming, smile. I stepped a few paces nearer. Then I knelt down and began my message, "Hail, Mary, O favoured one, the Lord is with you".

*Claire R Pegg*

# Dates for your Diary - December 2025

## **Monday 1st December**

7.30pm - St Edmund's Choir Vestry - Handbells

## **Tuesday 2nd December**

2.00pm - St Matthew's Fellowship Room - FOSM Christmas Party

7.30pm - Chris & David Halfpenny's home - 22 Questions

## **Wednesday 3rd December**

10.30am - St Edmund's - Holy Communion, led by Phyllis Bainbridge

## **Thursday 4th December**

10.00am - St Edmund's Church Hall - Baby & Toddler Group

## **Saturday 6th December**

9.30am - St Edmund's - Groundforce

## **Sunday 7th December**

Food Bank Sunday - *Please leave any donations in St Edmund's Church or in St Matthew's Fellowship Room by Tuesday 9th December. Thank you.*

10.00am - St Edmund's - All Age Worship, led by Revd Rachael Brooks  
& the All Age Team

10.00am - St Matthew's - Choral Holy Communion, led by Phyllis Bainbridge

6.00pm - St Matthew's - Evensong, led by Clive Lemmon

## **Monday 8th December**

2.00pm - St Edmund's Choir Vestry - Bookworms: 'The Day of the Jackal' by  
Frederick Forsyth

7.30pm - Community Room, Catherine McAuley House - Ascension Prayer Group

7.30pm - St Edmund's Choir Vestry - Handbells

**Tuesday 9th December** 12 noon - St Edmund's Church Hall - Luncheon Club

## **Wednesday 10th December**

10.30am - St Edmund's - Holy Communion, led by Revd Rachael Brooks

10.45am - Holy Communion at Stanley House

11.20am - Holy Communion at Abbeydale

6.00pm - St Edmund's - Carols in the Churchyard, led by Revd Rachael Brooks

6.30pm - The Markeaton Pub - St Matthew's Choir singing

## **Thursday 11th December**

10.00am - Allestree Park - Nature Tots

6.30-10.30pm - St Matthew's - The Derwent Singers

## **Friday 12th December**

8.30am - 10.30 am - St Matthew's Fellowship Room - Community Café

# Dates for your Diary - December 2025 continued

## **Saturday 13th December**

9.30am-12 noon - St Matthew's carpark - Refills on the Road (last one of the year)

## **Sunday 14th December -**

10.00am - St Edmund's - Holy Communion, led by Phyllis Bainbridge

10.00am - St Matthew's - Nine Lessons & Carols, led by Revd Rachael Brooks

4.00pm - St Edmund's - Christingle service

5.45pm-6.30pm - St Matthew's - Darley Abbey Christmas Tree Trail and Carols  
outside the church

## **Monday 15th December**

7.30pm - St Edmund's Choir Vestry - Handbells

## **Tuesday 16th December**

12 noon - St Edmund's Church Hall - Luncheon Club

## **Wednesday 17th December - *Please note the new time of 10.30am***

10.30am - St Edmund's - Holy Communion, led by David Anderson

## **Thursday 18th December**

10.00am - St Edmund's Church - St Edmund's Preschool & St Edmund's Baby &  
Toddler Group Christmas service in church followed by the normal session  
in the hall

## **Sunday 21st December -**

10.00am - St Edmund's - Morning Prayer, led by John Rice

10.00am - St Matthew's - Choral Holy Communion, led by Revd Rachael Brooks

After 10.00am service - St Edmund's - Burial of ashes of Margaret & Edward Emmans

4.00pm - St Edmund's - Nine Lessons & Carols

## **Monday 22nd December**

7.30pm - St Edmund's Choir Vestry - Handbells

## **Wednesday 24th December - *Christmas Eve***

There will be no 10.30am Holy Communion service at St Edmund's

2.00pm - St Edmund's - Crib service, led by Revd Rachael Brooks & the All Age Team

4.00pm - St Edmund's - Crib service, led by Revd Rachael Brooks & the All Age Team

5.30pm - St Matthew's - Crib service, led by Revd Rachael Brooks & the All Age Team

11.15pm - St Edmund's - Midnight Mass, led by Revd Rachael Brooks  
& Phyllis Bainbridge

## **Thursday 25th December - *Christmas Day***

10.00am - St Edmund's - Holy Communion, led by Revd Rachael Brooks

10.00am - St Matthew's - Holy Communion, led by Phyllis Bainbridge

## **Saturday 27th December**

9.30am - St Matthew's - Churchyard Working Party



# Dates for your Diary - Dec.'25/January 2026

## **Sunday 28th December**

10.00am - St Edmund's - Joint Choral Holy Communion, led by Revd Rachael Brooks  
& Adrian Thorp

## **Wednesday 31st December**

There will be no 10.30am Holy Communion service at St Edmund's

## **Saturday 3rd January**

9.30am - St Edmund's - Groundforce

## **Sunday 4th January**

Food Bank Sunday - *Please leave any donations in St Edmund's Church or in St Matthew's Fellowship Room by Tuesday 6th January. Thank you.*

10.00am - St Edmund's - All Age Epiphany service, led by Revd Rachael  
& the All Age Team

10.00am - St Matthew's - Holy Communion

3.00pm - St Edmund's Church Hall - Epiphany Celebrations - see Page 18 for details

6.00pm - St Matthew's - Evensong

## **Monday 5th January**

9.30am-12 noon - St Matthew's carpark - Refills on the Road

## **Tuesday 6th January** 12 noon - Luncheon Club

2.00pm - St Matthew's Fellowship Room – FOSM - 'The Dark Side of Nursery  
Rhymes', Tracey French

## **Wednesday 7th January - *Please note the new time of 10.30am***

10.30am - St Edmund's - Holy Communion

## **Thursday 8th January**

10.00am - St Edmund's Church Hall - Baby & Toddler Group

## **Sunday 11th January**

10.00am - St Edmund's - Holy Communion

10.00am - St Matthew's - Morning Prayer

6.00pm - St Edmund's - Choral Evensong

## **Monday 12th January**

2.00pm - St Edmund's Choir Vestry - Bookworms: 'The Island' by Victoria Hislop

7.30pm - Community Room, Catherine McAuley House - Ascension Prayer Group

## **Wednesday 14th January - *Please note the new time of 10.30am***

10.30am - St Edmund's - Holy Communion

## **Thursday 15th January** 10.00am - Allestree Park - Nature Tots

## **Friday 16th January**

8.30am - 10.30 am - St Matthew's Fellowship Room - Community Café

# Dates for your Diary - January 2026 continued

## **Sunday 18th January**

10.00am - St Edmund's - Morning Prayer

10.00am - St Matthew's - Holy Communion

6.00pm - St Matthew's - Choral Evensong

## **Monday 19th January**

9.30am-12 noon - St Matthew's carpark - Refills on the Road

**Tuesday 20th January** 12 noon - Luncheon Club

## **Wednesday 21st January - *Please note the new time of 10.30am***

10.30am – St Edmund's – Holy Communion

## **Thursday 22nd January**

10.00am – St Edmund's Church Hall - Baby & Toddler Group

## **Sunday 25th January**

10.00am - St Edmund's - Holy Communion

10.00am - St Matthew's - All Age service, led by Revd Rachael & the All Age Team

6.00pm - St Edmund's - Choral Evensong

## **Wednesday 28th January - *Please note the new time of 10.30am***

10.30am – St Edmund's – Holy Communion

## **Thursday 29th January**

10.00am – St Edmund's Church Hall - Baby & Toddler Group

## **Saturday 31st January**

9.30am - St Matthew's - Churchyard Working Party

---

## Parish Office Hours & Contact Details

The Parish Administrator is Caroline Audley who can be contacted by email: [Steds.stmatts@outlook.com](mailto:Steds.stmatts@outlook.com) or telephone her on 552031. Office opening hours:-

### **Monday & Wednesday**

9.30am - 3.00pm

### **Tuesday**

Closed

### **Thursday**

11.30am - 3.00pm  
(after Baby & Toddler  
Group)

### **Friday**

9.30am - 1.00pm

If out of hours please leave  
a message; the answer phone  
is checked daily.



## Sunday services at St Edmund's in December



Sunday 7	10 am	All Age service
Wednesday 10	6 pm	Carols in the Churchyard
Sunday 14	10 am	Holy Communion
	4 pm	Christingle
Sunday 21	10 am	Morning Prayer
	4 pm	Nine Lesson & Carols
Wednesday 24 - Christmas Eve	2 pm & 4 pm	Crib Services
	11.15 pm	Midnight Mass
Thursday 25th - Christmas Day	10 am	Choral Holy Communion
Sunday 28	10 am	Joint Holy Communion at St Edmund's

## All Age Worship, 10am



Sunday 7th December at St Edmund's

This service is informal, interactive and suitable for all ages.

The theme will be Advent, imagining Mary and Elizabeth meeting, excited about their babies.

**All welcome**

## Sunday services at St Matthew's in December



Sunday 7	10 am	Choral Holy Communion
	6 pm	Evensong
Sunday 14	10 am	Nine Lessons & Carols
	5.45 pm	Christmas Tree Trail & Carols
Sunday 21	10 am	Choral Holy Communion
Christmas Eve	5.30 pm	Crib service
Christmas Day	10 am	Holy Communion
Sunday 28	10 am	Joint Holy Communion at St Edmund's

**All welcome**

Join in with our *family friendly*



## Carols in the Churchyard

St Edmund's  
Wednesday 10 December  
6 pm

**All welcome**

# Christian Aid Christmas Appeal:

## 'No crib for a bed, when you're fleeing violence'

### A SORRY TALE OF GREED AND NEED FROM AFRICA.

Last Christmas, I wrote about the troubles of a thirteen-year-old country - South Sudan whose population, swollen by refugees from violence in Sudan, continue to be displaced from their homes by violence and by the flooding which has been widespread and destructive in this part of Africa during 2025.

The Christian Aid Christmas Appeal this year focuses on a displaced family in the eastern part of the adjacent Democratic Republic of the Congo, which, since South Sudan gained independence from the remainder of Sudan, has become the second largest country in Africa after Algeria and one with great mineral wealth. Despite, often because of, these resources many have been displaced. Over 5 million, according to the UN, fleeing their homes because of insecurity and subject to abuse from the various factions that squabble for power and for access to minerals in great demand for use in electronics and phones around the world. One of those who has been displaced is Chance, pictured, a mother with small children who has become separated from her husband in the chaos.



*Chance, a mother in a displacement camp in DRC, carrying water while a group of boys look on.*

The UN estimated this November that in Congo 'nearly 25 million people are experiencing high levels of food insecurity' and that 'for families this means that they're skipping their meals, depleting all of their household assets' and 'selling off their animals' including 3 million facing 'emergency' (which is just below 'famine') levels of hunger. This year, responding to budget cuts, the UN has reduced the number to whom it can provide humanitarian aid from 1 million to 600,000 of the worst-

affected people. If an immediate funding boost is not made (and an increase in the UN's aid budget seems extremely unlikely), then the number helped by them during the next six months will dwindle to 300,000 while the number in 'emergency' levels of hunger is projected to rise to nearly 4 million during the first few months of 2026. The unstable and violent situation is in addition to flooding to which has affected the eastern regions of the country for much of this year, as in South Sudan, hampering travel and access to clean water with the consequent spread of disease.



## Christian Aid Christmas Appeal: 'No crib for a bed, when you're fleeing violence'

A SORRY TALE OF GREED AND NEED FROM AFRICA continued

Since the 1970s Christian Aid has had a presence in Congo, working to establish inclusiveness and good governance and efforts to eliminate the causes of poverty. During that time well-established relationships have been developed with trusted contacts in the country. Through these partners it continues to respond to changing needs, deliver emergency funding and bring hope to destitute families, supporting mothers to protect their children from malnutrition, disease and pain. I invite you to share in the ongoing worldwide work of Christian Aid with your gifts at our Christmas Eve Crib Services and Midnight Communion Service. Last year you donated £405 over our two crib services, thank you – let's see whether we can do much better than that this year.

*Geoff Bailey*

**LATE NEWS.... LATE NEWS.... LATE NEWS.... LATE NEWS.... LATE NEWS....**

The BBC released a report in mid-November, after I had written the above article, that a 'framework for peace' had been signed in Qatar between the DRC government and the M23 rebels. Widely held to be backed by Rwanda, which Rwanda denies, M23 controls several eastern provinces of the country. This is the latest of several 'deals', including those brokered by the USA (with its interests in securing mineral rights), that have failed to resolve decades of violence in the region. However, if the latest deal does lead to even a limited period of calm it will enable sorely needed humanitarian aid to reach the local population.

*Geoff Bailey*

---

## Allestree W.I. Meetings - 16th December 2025

The last meeting of the year is the W.I. Christmas Party. It is on Tuesday 16th December at 2.00pm at Woodlands Church, Blenheim Drive, Allestree, DE22 2GP. There will be Music, Poems, Readings and Secret Santa. The Competition is 'A Christmas Table Decoration'. Visitors welcome, £5.00pp.

## Then, the first meeting of 2026 is on 20th January

at 2.00pm at Woodlands Church, Blenheim Drive, Allestree, Derby. DE22 2GP. W.I. Resolutions will be discussed followed by Tea & Chat. There is no Competition this month. Visitors welcome at £5.00pp but they will not be able to vote.

Enquiries about either meeting can be made to Mavis on 01332 556012.



**ST NICK'S CHURCH**

# Nativity Festival

WEDNESDAY 10<sup>TH</sup> FRIDAY 12<sup>TH</sup>  
& SATURDAY 13<sup>TH</sup> DECEMBER  
10AM - 2PM




A COLLECTION OF NATIVITY  
SCENES FROM AROUND THE  
WORLD WILL BE ON DISPLAY.

LIGHT REFRESHMENTS WILL BE  
AVAILABLE

[WWW.STNICKSALLESTREE.CO.UK](http://WWW.STNICKSALLESTREE.CO.UK)

# CHRISTMAS CONCERT

Festive choral singing,  
audience carols  
and a mince pie

MUSICAL DIRECTOR  
DEXTER DROWN

St Matthew's Darley Abbey  
Thurs. 11<sup>th</sup> Dec., 7.30pm

Tickets £10 (under 18 free)  
online or at the door (cash/card)



**The Derwent Singers**  
2025/2026 58<sup>TH</sup> SEASON

**St Matthew DARLEY ABBEY** **Derbyshire Wildlife Trust**

## Nature Tots

St Edmund's Baby & Toddler Group in partnership  
with Derbyshire Wildlife Trust



A pre-school playgroup with a difference,  
connecting children with nature;  
encouraging them to learn, play and have  
fun outdoors

**Thursday 11 Dec, 10-11.30am,  
Allestree Park**

Park in the main carpark off the A6, DE22 2EU, walk towards the hall, a  
member of the team will direct you.

Please wear suitable clothing and footwear as we are outside. Bring a  
lidded travel cup as hot drinks are available.

£2 suggested donation per child.

**All welcome**

Follow us on Facebook - St Edmund's Allestree Baby & Toddler Group

**St Matthew DARLEY ABBEY** **ST EDMUND'S** **THE CHURCH OF ENGLAND**

Join us for our *family friendly*  
**Christingle Service**



**St Edmund's**  
**Sunday 14 December**  
**4 pm**

**All welcome**

## Wednesday Holy Communion Service - New Time

From 3rd December, for a trial period to the end of March 2026, the Wednesday Holy Communion service at St Edmund's will move to the later start time of 10.30am.

This slightly later time may help more people to attend.

*Revd. Rachael Brooks*

---

## All Soul's Service, Sunday 2nd November 2025



The St Edmund's All Soul's Service is a service of prayer and thanksgiving. These beautiful candles were lit as the congregation remembered close family and friends.

---

## Allestree Flower Group - 16th December 2025



The festive theme continues at our next meeting on Tuesday 16th December with a Workshop by June Borrowdale entitled: "With Christmas In Mind". Time: 7.00pm for 7.30pm.

Venue: The Evergreen Hall, Cornhill, Allestree, DE22 2FT

Admission: Members £5.00 Non-Members £9.00

For further details telephone 07968 237457

## and on 20th January 2026

Brighten up January by coming to our first meeting of 2026 on Tuesday 20th January with a Demonstration by Louisa Rigden entitled: "Twists and Turns". Time: 7.00pm for 7.30pm.

Venue: The Evergreen Hall, Cornhill, Allestree, DE22 2FT.

Admission: Members £5.00 Non-Members £9.00

For further details telephone 07968 237457



# Some Good Walks Revisited: Canal Towpaths (5)

*The Rambler's Walks continue with The Canal Towpaths series:*

## FROGHALL AND THE CALDON CANAL

This area of the Churnet valley is now quiet and peaceful but was formerly the scene of intense industrial activity, centred on Froghall Wharf and its impressively-constructed canal system. A circular walk of 6½ miles is outlined which samples the varied scenery, including the Caldon Canal, its connecting Tramway and the Staffordshire Moorlands villages of Ipstones and Foxt. The route starts from Froghall which lies some 7 miles on the Staffordshire side of the R. Dove or 10 miles west of Ashbourne.



Froghall Wharf

The **Caldon Canal** is an 18 mile branch off the Trent and Mersey Canal from Etruria (Stoke-on-Trent) to Froghall at its eastern end; there are 17 locks and a good towpath. It was opened in 1778 and extended 10 years later through a tunnel to the present **Froghall Wharf** area. This became a hub of industrial enterprise over the next 140 years during which loads increased by more than 100-fold. Limestone was brought down the **Caldon Tramway** from quarries at Caldon Low 3 miles away. The last of the various tramways



Froghall Lime Kilns

operated up to 1920; it was of 3ft.6in. gauge, cable-operated, with descending truckloads hauling up the empty ones. At the wharf, limestone was either burnt in huge kilns to make quicklime, or it was loaded directly into barges for shipping along the canal system. Lime was used in mortar and in ironwork manufacture and was often added to soil to reduce its acidity and improve crop yields.

When railways began to take over the distribution work, larger kilns (seen near the wharf site entrance) were added in the 1880's, together with a branch line from the standard gauge Churnet Valley Railway (formerly part of the North Staffs. Railway Co.). This line followed both the R. Churnet and canal but closed to freight in 1988; part of it was later reopened as a tourist line between Cheddleton and Oakamoor and is still operating. The priority of railway construction at the time can be noted at one of the canal's bridges, designated 'Changeover Bridge', beyond which both canal and towpath had to be realigned. Another effect of the railway was the demise of the **Uttoxeter Canal** when its route was taken over and utilised by the rail company. This 13 mile extension from Froghall was one of the shortest-lived canals ever (1811-49) and only the basin and its connecting lock to the wharf remain; amazingly, there is still talk of canal restoration.

For many years the village of **Froghall** was a hive of industry; in addition to the above limestone business there was coal and copper distribution from the wharf. Copper



# Some Good Walks Revisited: Canal Towpaths (5)

manufacture took place at the Thomas Bolton Copper Works adjacent to the canal, whose products included the world's first transatlantic telegraph cable and copper wiring for WWII Spitfires; originally its raw copper came from the Ecton mines up the Manifold



Caldon Canal

Valley. The factory was demolished in 2011 but the enormous chimney, curiously isolated and adjacent to the canal, has been preserved.

**The Route** starts from Froghall Wharf c/p. Cross the wharf area to the canal towpath and when the canal tunnels under a road cross over and rejoin the towpath. Follow it for about 2½ miles alongside the Churnet and the railway, initially on the L bank past Cherry Eye Bridge, but at bridge 52 the towpath crosses to the R bank. Then, shortly after passing a lock and mill, leave the canal at bridge 50B (spans rail and canal). Follow steps R, over the road, continuing into Booth's Wood, winding uphill L and R. When the f/p levels, exit the woods by a stile L (004488) towards Glenwood House. Follow a drive to the entry gate, turn R and along the line of telegraph poles (direction E) towards Booth's Hall Farm. Before the farm bear L at a

gate (011489) and cross a field diagonally to the farm drive. Follow this up to the road and turn R into Ipstones village. Turn R on Froghall Road, L on St. Lawrence Avenue and through a jitty at its end, then R down a winding lane. Alternatively, turn L to village centre and R past a small memorial garden and down the lane to Primrose Terrace.

Turn L down steps at Primrose Terrace to a minor lane (direction SE) which becomes a drive then a f/p, dropping down through woodland, over a stream (030492) and rising into a lane. Turn R at the top past the church into Foxt village. When the road splits, bear L to a f/p past Rock House Farm, bear R and drop downhill (S/SE) to Shirley Brook (038482). Cross this and another ravine via footbridges and sets of wood steps, rising up to the old tramway track. Follow this for a good ½ mile as it slopes gradually down to Froghall Wharf.

## *The Rambler*

*\* Reached from the A52 by turning sharp R (for Foxt) at the bottom of a steep hill after Whiston.*



Cherry Eye Bridge



Ipstones to Foxt footpath

# SAVE THE DATE for 2026 Events

**4th Jan. at 3.00pm:** Brighten the start of 2026 and join us in St Edmund's Church Hall for an Epiphany celebration with readings, music (including choir items), hand bell ringers and audience participation. Refreshments available.

**16 Jan. at 7.30pm:** All Saints Church Mackworth is raising money to repair the wear and tear on their 400 year old bells, taken down after the 2020 arson attack. To support this appeal, a great local band UNTRACEABLE are playing covers of artists as diverse as Beyoncé, Dolly Parton and Bruce Springsteen at the Folly at the Farmhouse, Mackworth. Tickets on the door cost £7 Adult and £4 aged 16 or under.

**17th Feb: Shrove Tuesday:** Pancakes (sweet and cheese fillings) served from 5.00pm to 7.00pm in St Edmund's Church Hall. Raffle tickets will be on sale - Great prizes including a food hamper.

**28th February 10.00am to 1.00pm:** Table Top Sale in St Edmund's Church Hall. Come and grab bargains from a variety of stalls. There will be a Church cake stall - contributions gratefully received. Refreshments available. If you would like to book a table (large 6 ft long £15, small 4ft long £10), please contact [marypollett@hotmail.com](mailto:marypollett@hotmail.com) or telephone 07773138285.



## Recipe: Mulled Wine

Useful Tip: Use a good quality red wine like an unoaked tempranillo or try a twist with a dash of sloe gin.

**Ingredients:** 750ml bottle red wine      2 strips lemon zest,  
1 large cinnamon stick or 2 small ones      (use a potato peeler)  
2 star anise and 4 cloves      4 tbsp caster sugar

**Method:** Put the red wine, cinnamon, star anise, cloves, lemon zest and sugar in a large pan. Cook on a low heat for 10 mins. Remove from the heat and cool, leaving to infuse for about 30 mins. To serve, heat without boiling, stir in the sloe gin (if using, see tip above) and pour into mugs or heatproof glasses.

*From the BBC Good Food website*







**ST MATTHEW'S**



## **Festival of Lessons & Carols**



**St Matthew's**  
**Sunday 14 December**  
**10 am**

**All welcome**



**ST EDMUND'S**



## **Festival of Nine Lessons & Carols**



**St Edmund's**  
**Sunday 21 December**  
**4 pm**

**All welcome**



**ST EDMUND'S**



Join us for our *family friendly*  
**CRIB SERVICES**



**St Edmund's**  
**Christmas Eve**  
**2 pm & 4 pm**

**All welcome**



**ST MATTHEW'S**



Join us for our  
*family friendly*



**CRIB SERVICE**

**St Matthew's**  
**Christmas Eve**  
**5.30 pm**

**All welcome**

# Book Review & Reflection

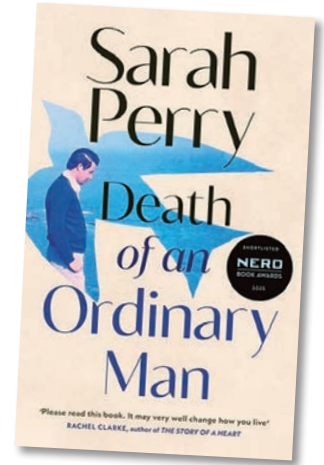
## “Death of an Ordinary Man”, by Sarah Perry

ISBN: 9781787336001     Pub. Hardback, 2025 (Penguin/Vintage), Audiobook

### Paul and Kate wrote this reflection based on the recent BBC Radio 4 Book of the Week

Standing outside Jarrolds in Norwich, author Sarah Perry watches her father-in-law David walk towards her. She notices the ashen colour of his face and his lop-sided gait, and suddenly, she has a horrible premonition that he is dying. Sadly, she's right.

Her account of looking after David in his last days is not an easy read but is ultimately uplifting. Sarah spares us none of her own heartache, and the book proceeds at a breakneck pace: it's as if those involved (family, friends, NHS carers) cannot cope with the rapidity with which David's health deteriorates. (He dies just nine days after a diagnosis of oesophageal cancer.)



The title is well-chosen because it points us to one of the book's central truths: David is a very everyday person, yet his combination of personality, character and interests (his laugh, his stamps, his antiques magazines, his love of seaside trips with fish and chips) make him special. We may be average, but we're all unique, and we are all precious.

This is not a book about bereavement but rather the process of dying. But it does still manage to be affirmational, because it recognizes that dying is inseparable from living. This echoes the “in the midst of life we are in death” from the Book of Common Prayer funeral service, Cranmer's translation of the beginning of the ancient Latin plainsong hymn “Media vita in morte sumus”.

Throughout David's short but terminal illness, he and his family come into contact with many NHS personnel: receptionists, GPs, consultants, nurses, community carers, pharmacists, and the contractors who deliver specialised equipment for end-of-life care at home. The NHS emerges as a wonderful but flawed organisation, with compassionate caring personnel hobbled by lack of resource and inflexible processes.

Sarah describes herself as unsure about her faith, whereas David is a staunch churchgoer. But she does recognise David's hope that he is going to a better place where he will be reunited with his late wife Jenny – even if at the same time she cannot believe that for herself. It is a wonderful example of her love that she is able to suspend her own disbelief out of respect for his faith.

Continued on page 21

## Book Review continued

There are so many examples of strong writing, not least the detailed description of David's decline and final hours. But for me, one stands out. As his illness progresses, David suffers from increasing incontinence, which he naturally finds extremely embarrassing. Sarah struggles to cope, specifically with the forced and unprecedented intimacy of undressing and washing her own father-in-law. But suddenly, her reticence falls away: in a sublime revelatory moment, it's as if there is a hand on her shoulder. She interprets this as the touch of mothers and sisters across the generations who have had to do whatever is needed to care for their family members.

This book is beautifully written by an author with a rare gift for expressing emotion, as well as an artist's eye for visual detail. Hopefully, she found some inner peace by committing her feelings to the printed page. Our sole criticism is that it would have been lovely to see more photos of the family members mentioned. But the dilemma with any memoir is "how much to keep private, how much to reveal?" – and in this case that must have meant extra-difficult choices.

We have a hard copy which we're happy to lend. You may also be able to catch recordings of "Death of an Ordinary Man" on BBC Sounds, where it is sensitively read by Louise Brealey.

*Paul & Kate Smith*

November 2025



**Buzzy Bees  
Physiotherapy**

**Feeling a bit unsteady,  
stiff or losing confidence  
with walking?**

Give yourself confidence and safety to  
move freely and stay active

Physiotherapy helps people regain strength,  
reduce falls and stay independent

Scan the QR code to book a home  
physiotherapy session today

 [www.buzzybeesphysio.co.uk](http://www.buzzybeesphysio.co.uk)

Helping you live comfortably and safely!

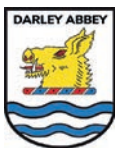
## OPEN HOUSE COFFEE AT ST. EDMUND'S

Join us for coffee -  
everyone welcome.  
We'd love to see you!

We serve coffee and biscuits  
on Sunday mornings between  
11.00am and 11.45am in  
St Edmund's Church Hall.

After the 10.30am Service on  
Wednesday morning coffee  
is served inside the Church  
at 11.15am.

Please come and join us



## 63rd Derby Scout Group: Christmas Curry n Quiz Night with Quizmaster Matt Chell

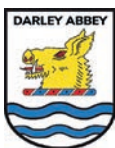
Saturday 13th December 2025, 7.30pm (doors open 7pm)  
at Darley Abbey Scouts Hall (The Hill, DE22 1DT)

Chicken or veggie curry and rice, with veggie samosas. Children's option of hotdogs. Bar. Teams of 6 adults max. (plus children). Tickets (adults £15, under 16s £10). Tickets on sale from The Greenery (Church Lane (cash only)), Derwent Emporium (Darley Abbey Mills (cash only)) or from Sue by text 07925- 633877 or e-mail 63rdderbyscouts.tickets@gmail.com (cash or bank transfer).

If you want to sit together as a group please let us know in advance. We have a small car park with wheel-chair access into the Hall. Please let us know if you will be bringing your wheelchair or mobility scooter.

Christmas Raffle to drawn at the Curry N Quiz Night. Tickets 50p (£2.50 per book) available from The Greenery, Headlines By Julie, Derwent Emporium or from Sue by text 07925- 633877 or e-mail 63rdderbyscouts.tickets@gmail.com

### ALL PROCEEDS HELP TO SAVE THE SCOUTS HALL



## Darley Abbey Scout Hall Christmas Saturday Social on 20th December

At a loose end? Fancy a natter over a cuppa with biscuits? Like to play some games or browse our papers and magazines? Then come along to Darley Abbey Scout Hall (DE22 1DT) on 20th December 2025, 1.30-3.30pm where we will be having some festive food to celebrate Christmas.

We have a small car park and the Hall is fully accessible to wheelchair and mobile scooter users.

Our Saturday Socials are free of charge thanks to the Co-op and its customers. The Saturday Socials are held on the third Saturday of every month and the first Saturday Social of 2026 will be on Saturday 17th January.

### Allestree Youth Club

**Allestree Youth Club is BACK**

As we begin the new term, our youth group continues to grow, evolve, and thrive! There's a real sense of excitement about what God is doing among our young people and plenty of opportunities for the wider church family to get involved.

At the end of last term, we gave a warm send-off to Jonathan, who is now training to be a vicar in Bristol. This term, one of our key focuses will be recruiting new volunteers. We're delighted that a volunteer from the St Ed's/St Matt's parish has already come forward, eager to get involved. If you feel called to support Allestree Youth Club (AYC), please do speak to Rev Sarah or Rachel Kennedy. We'd love to hear from you!

**UPDATE**

Food has always been a big part of AYC life (who can forget the legendary Pot Noodles?), and this year we've taken things up a notch! We've introduced hot chocolate and toast complete with a wide range of toppings. Unsurprisingly, Nutella has been a clear winner so far. We're also chatting with Luke, a local butcher at Park Farm, who is keen to support us as we explore the possibility of serving bacon and sausage butties. If you enjoy cooking or serving food, joining the catering team would be a brilliant way to help.

On the activity front, our sessions now include a mid-session game to help everyone connect and have fun together. Looking ahead, we're planning to introduce shared testimonies in the new year as we continue to nurture faith and community.

Please keep our youth, leaders, and volunteers in your prayers as we move into this exciting season. Thank you for being part of a church family that continues to invest in the next generation!





ST EDMUND'S



# Midnight Mass



St Edmund's  
Christmas Eve  
11.15 pm

**All welcome**



ST EDMUND'S



# Holy Communion on CHRISTMAS DAY



St Edmund's  
Thursday 25 December  
10 am

**All welcome**



ST MATTHEW'S



# Choral Communion on CHRISTMAS DAY



St Matthew's  
Thursday 25 December  
10 am

**All welcome**



ST EDMUND'S



# Join us for our *joint* Holy Communion Service



St Edmund's  
Sunday 28 December  
10 am

**All welcome**



## Blacksmith Experience Day

Beginner & advanced classes  
The art of blacksmithing with

# HAZELL FORGED



Contact Belper Blacksmith Richard Hazell  
to arrange your experience day  
0753 400 2300  
HazellForged@gmail.com

# HAZELL FORGED

## Hand Forged in Belper

Traditionally Forged Ironwork,  
Designed with Thought, Crafted with Care  
Belper Blacksmith Richard Hazell  
0753 400 2300 HazellForged@gmail.com





# W Jones & Son

FUNERAL DIRECTORS

ESTABLISHED 1864

**An independent family funeral business  
offering a professional and caring service**

*Pre-arranged funeral plans available  
through Ecclesiastical Planning Services*

**01335 360319**

Main Road, Brailsford, Ashbourne DE6 3DA  
E: [cwjones600@yahoo.co.uk](mailto:cwjones600@yahoo.co.uk)    [www.wjonesandson.com](http://www.wjonesandson.com)

# December 2025

## Bishop Malcolm writes...

### Advent Hope - Light in the darkness



As I write it is not even December yet but by 4pm it is already nearly dark! All the darker as the weather gets wilder and wetter, with the promise of the white stuff coming any day now. At least in the dark the snow will bring its own unique reflective brightness.

Whilst officially still autumn until December 21st – by which time the last leaf in Derbyshire will surely have fallen - these rapidly shortening days and lengthening hours of night shroud us in this season with foreboding, as much as in anticipation. These are the days we learn to appreciate the light, and begin to pine for more of it long before Spring comes.

Our regular seasonal gathering gloom is more than matched by the dark shadows which prevail in our nation and in the wider world. Like buses it seems existential crises all arrive at once – poverty and inequality, destructive weather events caused by climate change, and persistent conflict erupting in devastating wars. Dark days indeed for a world that had come to believe in progress. And most especially, for the poor, the vulnerable, and the dispossessed.

At our churches in Advent, Sunday by Sunday we hear the words of the Hebrew prophets. They were realistic about darkness, about human failure and sin, and its impact on the whole of society, especially on those who were most vulnerable – in that time the orphan, the widow, the alien or stranger. A society that failed to live up to God's call to justice, integrity, and compassion was doomed to fail. Judgment was inevitable where people turned their back on the responsibilities of being human.

In the days of the Hebrew prophets there were those who thought you could away with thinking of your own nation only. But this was not the whole picture. In the scriptures and most especially in the New Testament we see a different perspective emerging – the recognition of the whole human family as created by God, invited to share in the 'fullness of life' which is Jesus' gift to us.

The internationalism of the Gospel is a core value of the Christian faith. Contemporary versions of Christianity that revert to the attitudes of the Crusades are perversions of our faith. As the established church in England we have to be careful not to misrepresent Jesus, the Saviour not just of **our** people, but of **all** people. Why? Because 'God so loved **the world**.' Not just me and the people who agree with me. Not just my people, not just my ethnic group or my country, but the whole wide world. This includes everyone:

The orphaned child taken care of within a family fleeing the fighting in Sudan. The elderly woman who cannot understand why she has to leave her pacific island home, soon to be devoured by the rising sea. The young man fleeing persecution for his faith. All these, along with our friends and neighbours here at home and at school and at work, are part of that same human family into which Jesus was born, and for which Christ died and rose again. And yet the journey is so hard, and the way is so dark, for many today.

John Donne, 16th Century poet and Dean of St Paul's in London, published a poem expressing the darkness of his grief at the loss of his beloved. On St Lucy's day, 13th December, then believed to be the shortest day, he wrote of his experience of loss: 'It is the year's midnight, the Dies Lucies'. Not from 13th December, but from the end of the month, the days do begin to turn brighter and longer again. Donne in his darkness did not despair absolutely – he knew the light would return. So even in the thick darkness of December we detect the seeds of hope. As someone reminded me recently, during the winter there is life and growth – we just don't see it because it is going on underground.

## ALLESTREE LUNCHEON CLUB

**GREAT FOOD &  
INTERESTING, LOVELY  
PEOPLE**

**Takes place every two  
weeks - Look at the  
Diary Dates pages**

**If you'd like to join us for  
a meal please ring Anne  
Madge, 07971 680377**

## ALLESTREE SATELLITE AERIAL SERVICES

**BASED IN ALLESTREE BUT COVERING  
ALL AREAS IN DERBY & DERBYSHIRE**

- Professional conscientious Engineer with over 25 years experience
- TV Aerial repairs and installations
- FREEVIEW wideband digital aerials
- FREESAT installations
- SKY installations, dish realignment
- Additional points installed
- Telephone points installed

**Call Paul today for a free estimate.**

Tel: 07985 405244

email: paulflowersas@aol.com

33 Lockwood Road  
Allestree, Derby, DE22 2JD



## ADVERTISE IN THIS MAGAZINE

If you are a local trader, or have an event to promote, why not place an advertisement in the St Edmund's Church magazine. It is an inexpensive way to reach the local population of Allestree and Darley Abbey.

Contact Caroline Audley,  
parish administrator on email  
Steds.stmatts@outlook.com  
for details on cost  
and publication dates.



## STEVE FIXES COMPUTERS

**Windows 10**  
End Of Life

### WINDOWS 10 IS FINISHING

**Microsoft will stop supporting  
Windows 10 from 14 October  
2025**

If you currently use Windows 10 on your PC or laptop, please be aware that it will no longer be updated after this date, making you increasingly vulnerable to security risks if you continue to use it.

However, don't rush out and buy a new PC/laptop, please contact me instead. In most cases I will be able to upgrade your existing device with Windows 11, plus offer guidance on using it, if required.

Call: **Steve Little** on 07947 868605  
Email: **steve\_little@hotmail.com**

# **SHOW HOME SHUTTERS**

**Shutters      Rollers      Romans**

**Verticals      Venetians      Vision**

**ALL TYPES OF SHUTTERS  
HANDMADE CURTAINS  
ROMAN BLINDS AND BLINDS  
AT AFFORDABLE PRICES**

**Battery remote control blinds from only £180**

**Free fitting on all orders**

**For a free estimate, please ring Gary**

**Tel: 01332 205359**

**Mob: 07962 086864**

**[gary@interioroptions.co.uk](mailto:gary@interioroptions.co.uk)**

**Interior Options, 36-40 The Strand, Derby DE1 1BE**



# PASSING ON YOUR WEALTH

Leave a lasting legacy that means the world to you



There is more to inheritance than money and property.

Your legacy is as personal as your fingerprint. It extends beyond financial wealth, encompassing everything that defines you – from your core values and vision for the future to the knowledge, wisdom and experience you acquire over your lifetime.

Legacy planning captures all these elements and builds a wealth management strategy around them. Its aim is to give your beneficiaries a clear sense of the direction you would like them to take – so they can keep your legacy alive and aligned with your wishes for generations to come.

**Talk to us about family wealth management.**



Find out more about  
legacy planning

INVESTMENT PLANNING | RETIREMENT PLANNING | LEGACY PLANNING



Tel: 01332 551155  
[amgwealth.co.uk](http://amgwealth.co.uk)

Senior Partner Practice of St. James's Place  
Park Farm Drive | Allestree | Derby DE22 2QP



AMG Wealth is an Appointed Representative of and represents only St. James's Place Wealth Management plc (which is authorised and regulated by the Financial Conduct Authority) for the purpose of advising solely on the Group's wealth management products and services, more details of which are set out on the Group's website [www.sjp.co.uk/products](http://www.sjp.co.uk/products). The 'St. James's Place Partnership' and the titles 'Partner' and 'Partner Practice' are marketing terms used to describe St. James's Place representatives. AMG Wealth is a trading name of AMG Wealth Management Ltd.

SJP Approved 13/3/2025



# *Holbrook Hall*

## **Private Residential Home for the Elderly**



Holbrook Hall conforms to the highest standards of safety and comfort and has a well deserved reputation for its superb level of care and cuisine.

Short and long-stay residents welcome.

For further information please telephone 01332 880698  
or visit our website [www.holbrookhall.co.uk](http://www.holbrookhall.co.uk)

Holbrook Hall, Holbrook, Derbyshire DE56 0TF

## **J BARLOW & FAMILY**

Funeral Service



**A truly independent, award winning,  
family-run funeral directors committed to providing you with the  
highest level of service.**

Our commitment is to you and your family by providing a personal service in your hour of need. Together we will provide a professional and dignified funeral service that will also be unique and personal and we will guide you every step of the way. We will listen carefully to your family wishes and offer a complete choice and flexibility in the arrangements.



*Direct cremation   Bespoke Funerals   Pre-paid   Celebration of life*

*Here for you every step of the way*

**01332 409182**

41 Park Farm Centre  
Park Farm Drive  
Allestree

[www.ibarlowfuneralservice.co.uk](http://www.ibarlowfuneralservice.co.uk)





## *The Family Funeral Service®*



Greg Martin - Funeral Arranger

### Experts in Funeral Care for Nearly 120 Years

For generations we have provided exceptional funeral services with professionalism, compassion and attention to detail.

As a family-run business with nearly 120 years of experience, we understand the importance of dignity, respect, and personal care at every step.

- ✓ Trusted Expertise
- ✓ Unmatched Service
- ✓ Family Values

Here for you, whenever you need us.

### Derby

Derwent House, 9 Becket Street, DE1 1HT

**01332 348 800**

derby@lymn.co.uk

www.lymn.co.uk /awlymn /awlymn /a.w.lymn

*"Our family serving your family since 1907"*

## Richard Hill Interior/Exterior Decorator

City & Guilds advanced qualified  
with 30 years' experience  
Reasonable rates



For free estimate ring  
Richard on 01332 780907  
or 079220 90066 or email  
richard.dhill@hotmail.com

TRUSTED TRADER



## STEVE FIXES COMPUTERS

### STEVE CAN FIX & SERVICE YOUR PC, LAPTOP, TABLET, PHONE

\*Running slow? \*Stopped working? \*Can't get online?  
\* Issues with emails, broadband, printing, setting up, installing/using apps?

### DON'T PANIC!!

I'm in Belper and can come to you.  
All surrounding areas too!

### STEVE CAN GIVE YOU TUITION

\*Want to learn how to use or do something on your PC/ laptop?  
\*Need help with your phone/ tablet/ iPad?

Plus:- Affordable WEBSITES created  
VIDEOS transferred to DVD

Call: **Steve Little** on **07947 868605**  
Email: [steve\\_little@hotmail.com](mailto:steve_little@hotmail.com)

# St. Edmund's Parish

Church Website: [www.stedmundsallestreeandstmatthewsdarleyabbey.co.uk](http://www.stedmundsallestreeandstmatthewsdarleyabbey.co.uk)

For all enquiries regarding weddings, baptisms, funerals and parish events contact the Parish Administrator, Caroline Audley: email: [Steds.stmatts@outlook.com](mailto:Steds.stmatts@outlook.com) / telephone 552031.

Office opening hours:- Monday, Wednesday & Friday: 9.30am – 3.00pm  
Thursday: 11.30am – 3.00pm      The office is closed on Tuesday

If out of hours please leave a message; the answer phone is checked daily.

In an emergency, please contact one of the churchwardens.

## Directory

Associate Minister:	Revd Rachael Brooks: <a href="mailto:rev.rachaelbrooks@gmail.com">rev.rachaelbrooks@gmail.com</a>	07305 140573
Churchwardens:	Paul Smith	07792 569758
	Ann Miller	07831 506978
Parish Administrator:	Caroline Audley: <a href="mailto:Steds.stmatts@outlook.com">Steds.stmatts@outlook.com</a>	552031
Readers:	<i>Vacancies</i>	
Choir:	Elizabeth Jack	07779 255412
Treasurer/Gift Aid Sec.:	Chris Jack, 12 Regency Close, Littleover	07805 027515
PCC Correspondence Sec:	<i>Vacancy</i>	
Electoral Roll:	Matt Cooper	07572 110185
Flower Group:	Rosemary Yates	552742
	Pam Highman	551636
	Michèle Aspinall	07773 784009
Luncheon Club:	Anne Madge	07971 680377
Baby and Toddler Group:	Caroline Audley: <a href="mailto:Steds.stmatts@outlook.com">Steds.stmatts@outlook.com</a>	552031
Parish Safeguarding Links	Madeleine Fullerton	554762
	Louise Whittaker	556455
<hr/>		
Hall Bookings:	Caroline Audley - <a href="mailto:Steds.stmatts@outlook.com">Steds.stmatts@outlook.com</a>	552031
Handbells:	Gill Flatman	557028
St Edmund's Preschool CIC:	Hannah	07934 380561
	<a href="mailto:admin@stedmundspreschool.org">admin@stedmundspreschool.org</a> for enquiries	
Rainbows, Brownies & Guides:	Alwyn Young	07740 201963

St. Edmund's Parish Magazine Editorial Team: Chris Willis, Claire Pegg and Fiona Fraser.

---

Please EMAIL magazine articles and photos to both [fiona.fraser@burnsgraphics.co.uk](mailto:fiona.fraser@burnsgraphics.co.uk) and Chris Willis at [c.willis246@btinternet.com](mailto:c.willis246@btinternet.com)

Magazine Distribution: Chris Willis 558136

**DEADLINES: 20 Nov for Dec/Jan'26 magazine & 20 January for February 2026 magazine.**

Our Parish magazines are available as printed copies in Church and as a PDF on the website:-  
<https://www.stedmundsallestreeandstmatthewsdarleyabbey.co.uk>.

# St Edmund's Choir - Mary's 50 years of singing

On 9th November during choral Evensong we presented Mary Pollett with a certificate to mark her 50 years of loyal service to the choir. We would all like to thank her very much for her dedication and commitment. Mary also received a bouquet of flowers and we celebrated further with refreshments after the service.

Do join us in St Edmund's for the Carol Service on Sunday 21st December at 4.00pm. It will be a feast of seasonal music.

*Elizabeth Jack*



## Remembrance Sunday, 9th November 2025



The annual Service of Remembrance held at St Edmund's Church was followed by the laying of wreaths at the War Memorial in the churchyard. Among those who attended were our Allestree Councillors - Ged Potter, Kieran Morgan-McGeehan and Steve Hassall - and Professor Kathryn Mitchell CBE DL, Vice Chancellor & Chief Executive of the University of Derby.