



St. Edmund's Church

£1.00

News from the Parish

July 2025

**Magazine
subscriptions
ARE DUE**
See page 15

**IF YOU
HAVE YOUR
MAGAZINE
DELIVERED**

**IT'S
THAT TIME
OF YEAR!**



www.stedsandstmatts.co.uk

www.facebook.com/stedmundsallestree

St. Edmund's July 2025

While COVID has diminished in terms of its impact on us as a nation, we recognise that there will be some people who have still to be careful because they are vulnerable. If you feel you need to wear a mask, we encourage you to do so. We also gently request that if you are unwell, especially if you have COVID, you stay away to avoid infecting anyone who might be vulnerable.

For communion, normal practice has resumed regarding going to and from the rail. Please follow any directions given by the day's welcomers. At the rail you will be given three options regarding bread and wine. You may either indicate - by nodding your head - that you wish the wafer to be intincted for you by the person carrying the special intincting chalice, or you may accept the wafer only and then drink from the chalice brought after by the server. Or you may choose to just have the wafer.

There are halved grapes available for children at the rail so they join in this special feast, they will be given a prayer of blessing as normal. And if you do not feel communion is appropriate for you we encourage you to come to the rail, leaving your hands by your sides, so that we may pray a prayer of blessing over you.

Please stay for coffee or tea in the Church Hall after the service, it's a great opportunity to get to know new friends and to catch up with old ones.

FOOD BANK - The first Sunday of the month, 6th July 2025. Please leave your donations in St Edmund's Church or St Matthew's Fellowship Room by Tuesday 8th.

FRONT COVER: Montage of the bloom of a St Edmund's Rose with a photo of St Edmund's church porch.

BACK COVER: Photos from the Jane Austen afternoon - see pages 4, 5 and 14.

This month's colour cover is sponsored by Chris Willis in loving memory of Mike.

Can you support St Edmund's by sponsoring the colour cover in memory of a loved one or to celebrate an event? If you are interested please contact one of the editorial team or a Churchwarden. The cost is £35.00.

Open All Year: St Ed's and St Matt's are open regularly throughout the spring and summer months. Do pop in for some peace and space, and invite others to do the same. If you are there and people come in, please make them welcome.

Safeguarding Initiative

We have a strong Safeguarding Initiative here at St Edmund's. Full details can be found on the Church noticeboards and on our website www.stedsandstmatts.co.uk

The Rev'd Rachael Writes

I've been spending time with the All-Age team recently, planning for our new All-Age services which will be on the fourth Sunday of the month at St Matthew's and the first Sunday of the month at St Edmund's. This will broaden our range of opportunities on Sundays to reflect on our faith, think about what difference it might make to our lives, and worship God, who knows and created each of us as spiritual beings; with a need to love, be loved and belong.

These services will feature opportunities to get up and do. Many of us find learning sticks better if we're 'doing' and can join in, whether we're young in years or young at heart. So, if you're up for a bit of freshness and discovery of God's big story, we'd love to have you come and join in with a pilgrimage through some of the characters in the Bible over the coming months.

We are going to think about what makes them who they are and what we can learn from them and their interactions with God. It is always less painful to learn from other people's experience, don't you think?



First up is Adam and Eve. I'm sure there is a huge range of opinions about the pair of them. From those who think they were two actual people who lived several thousand years ago, to those who think they're representative 'types' in a big myth whose authors wrote it as a way of reflecting on what it means to be human, why there is evil in the world and who God is.

It seems like an opportune time to be reflecting on the human story and the existence of evil as we find ourselves in danger of being desensitised to the horrific violence people around the world are being subjected to. Perhaps even more disturbing is the wilful use of siege and organised starvation to bring a nation to its knees, and possibly destruction, while the rest of the world looks on.

International laws were put in place after the horrors of the Second World war to prevent nations descending to such inhuman behaviour again. We've seen them breached many times in the intervening years; it's still happening in many other places of the world today – think of Nigeria, Sudan and North Korea for a start - but never so egregiously and visibly as in Gaza today with little sanction by other nations.

Father God, we pray that your Kingdom of justice, love and peace would come, and your will for reconciliation with and between all people, would be done on earth as it is in heaven. Lord, have mercy and help us work for it. Amen.

Rev'd Rachael Brooks

Associate Minister, St Edmund's

Churchwardens' View

A Regular Update by Ann Miller and Paul Smith

Baptisms, Concerts and even Tea with Jane Austen

During June our services, life and activities at St Ed's have certainly kept us all on the go! We've been privileged to welcome families for three baptisms in our morning services during June; on each occasion the sun shone, lots of guests arrived and we had a very full and happy church. It's been particularly lovely and pertinent that the baptisms coincided with the time of our celebrating Pentecost and Whitsuntide.

On the secular front, we've enjoyed splendid events again this last month: in concert, High Edge Recorder Orchestra joined with Derby City Singers to treat us to a lovely and varied programme in the church hall, ranging from early (16th century) music to jazz and musical theatre. Admission was free; donations raised £130 for church funds and an enthusiastic audience had a good evening.

Afternoon Tea with Jane Austen commemorated in the church hall the 250th anniversary of her birth. Copious quantities of tea, along with cucumber sandwiches and scones with jam and cream - served 'posh' with elegant table cloths and china - did our Jane proud! Elizabeth Jack and friends played charming Haydn string trios, which Jane Austen would very likely have heard, and soprano Victoria Wilde, accompanied by Ann Miller, delighted us with a selection of songs popular at the time - including Mr Knightley's favourite (read 'Emma' to find out which song that was!). Diane Bakhda introduced the event, giving interesting context, and with Paul Smith read some amusing letters. It was a super afternoon and raised over £200.

We're very grateful to everyone who volunteers in The Team, helping to keep the church cogs turning; things like those baptisms, the concert, the Jane Austen tea, all relied on volunteer input. The 9 August vicarage garden party, thanking The Team, is something to really look forward to.



Churchwardens' View continued

We're also looking forward to welcoming, very soon, a Year 10 student for work experience with our churches. Between us, we hope we'll be able to give him a fair picture of church life. It will be an interesting experience for us all, which we hope will benefit our student.

By the time you read this, another concert in St Ed's church, celebrating Voices Choir's 30th birthday, will most likely have come and gone, but do keep your eyes peeled and look out for more happenings coming up.

Why Volunteers Matter So Much

Ann, Rachael and Paul recently took part in one of the annual services at which the archdeacons commission (and re-commission) churchwardens on behalf of the Bishop. Our archdeacon, Matthew, paid tribute to the vital work that wardens carry out, and he thanked those present most warmly for their contribution to the life and ministry of the church.

But for us, there's a wider point here. It's not just wardens, but volunteers generally. Up and down the country, most of the work that is done to allow our churches to operate, ministering to their congregations and their local communities, is done by volunteers. Thinking of St Edmund's, look at how much is done by volunteers: choral music is learned, practised and sung, flowers are arranged, brasses cleaned, communion taken to local residents, events organised, the churchyard kept tidy, lessons read, visitors welcomed, prayers written and said, toilets unblocked... and almost all of it is done by volunteers.

So, we're delighted that Rachael has arranged a special celebration of our volunteers' work. This will take place in the form of a garden party to be held at the Vicarage in Church Lane, Darley Abbey DE22 1EX from 2pm on Saturday 9 August. Details have been sent out via "team leaders", but anyone who volunteers to support the life of our church will be most welcome. It will be a great opportunity to meet our brothers and sisters who volunteer at St Matthew's, and celebrate all that volunteers do, are and give.

And, of course, we'd love to hear from **YOU** if you'd like to do more to help with the running of the church. We've recently added to our team of welcomers, but more would be lovely. We'd also like to get more people involved in leading intercessions on behalf of us all. We are still looking for an environmental co-ordinator, a crucial role as the Church of England seeks to move towards net zero carbon emissions by 2030 – an aim that needs action to be taken in every individual church, including our own. Please do join us in praying that the right people will come forward (see page 6).

Churchwardens' View continued

Important: Paul will stand down as a churchwarden at the 2026 Annual Meeting after four years in-post. Please pray with us that someone suitable will feel called to take on this vital and fulfilling role. If anyone would like to find out more about what it involves, please feel free to speak to either of us on a no-obligation basis. Wardens are PCC members and church trustees *ex-officio* (= by virtue of their role). Their main functions are to support the clergy's ministry, represent the church members, and to be responsible for the church's buildings and property.

So, if you can help in any respect, please get in touch. And for all those who already volunteer, often in multiple ways, may God bless you for generously giving both your time and your skills.

Ann & Paul

Churchwardens

PS. Don't forget that coffee and biscuits are served on Sundays 11.00am in the church hall and Wednesdays 10.45am in church. Please feel most welcome to join us.

Richard Wood's Birthday Celebration

In May, Richard Wood invited us to celebrate his birthday in the Church Hall after our morning service. It was a lovely occasion with so many of us wanting to share this special occasion. How lovely for family members from St Matthew's to be with us as well. With wine, cake and balloons, what more could we want? No need to guess how old our friend was as the balloons and cake said it all!



From the Registers of St Edmund's Church

BAPTISMS



1st June 2025:
Baptism of Nora Ratcliff
- seen here with her
mum and dad, Emily and
James, and the The Rev'd
Rachael Brooks.

8th June 2025:
Baptism of
Florence Redgate-Malewski

BURIAL OF ASHES at St Edmund's

14th May - Burial of ashes of Dorothy Perry

Allestree Flower Group - 15th July 2025

Our next meeting is on Tuesday 15th July where we will be having a demonstration by Jackie West with the theme of: "Summer's Splendour".

Time: 7.00pm for 7.30pm.

Venue: at The Evergreen Hall, Cornhill, Allestree.

Members £5.00 Guests £9.00

For further details telephone 07968 237457



Dates for your Diary June/July 2025

Saturday 28th June

9.30am - St Matthew's - Churchyard Working Party - Come & help to make the churchyard clean and tidy

9.30-12 noon - St Matthew's carpark - Refills on the Road

Sunday 29th June - 10.00am - Joint Holy Communion service at St Nick's

4.00pm - St Edmund's Church - Voices & Echoes Choirs concert - Free Admission

Tuesday 1st July

2.00pm - St Matthew's Fellowship Room - FOSM - Cream tea, sales table and chat

7.30pm - Chris & David Halfpenny's house - 22 Questions

Wednesday 2nd July

10.00am - St Edmund's - Holy Communion, led by Phyllis Bainbridge

Thursday 3rd July - 10.00am - St Edmund's Church Hall - Baby & Toddler Group

Saturday 5th July - 9.30am - St Edmund's - Groundforce

Sunday 6th July - Trinity 3 (Proper 9)

Food Bank Sunday - *Please leave any donations in St Edmund's Church or in St Matthew's Fellowship Room by Tuesday 8th July. Thank you.*

10.00am - St Edmund's - All Age Worship, led by Rachael Brooks & the AAW Team

10.00am - St Matthew's - Holy Communion, led by Phyllis Bainbridge

6.00pm - St Matthew's - Evensong, led by Clive Lemmon

Tuesday 8th July

12 noon - St Edmund's Church Hall - Luncheon Club

7.30pm - Zoom - St Edmund's Standing Committee Meeting

Wednesday 9th July

10.00am - St Edmund's - Holy Communion, led by Lee Martin

Thursday 10th July - 10.00am - St Edmund's Church Hall - Baby & Toddler Group

Saturday 12th July - 9.30-12 noon - St Matthew's carpark - Refills on the Road

Sunday 13th July - Trinity 4 (Proper 10)

10.00am - St Edmund's - Holy Communion led by Rachael Brooks

10.00am - St Matthew's - Morning Prayer, led by Clive Lemmon

After the 10am service - St Edmund's - Burial of ashes of Brian Trowbridge

6.00pm - St Edmund's - Choral Evensong, led by Rachael Brooks

Monday 14th July

2.00pm - St Edmund's Choir Vestry - Bookworms: The Colour by Rose Tremain

7.30pm - Ascension Prayer Group at Catherine McAuley House Community Room

Dates for your Diary July 2025 continued

Tuesday 15th July

7.30pm - St Edmund's Conference Room - PCC Meeting

Wednesday 16th July

10.00am - St Edmund's - Holy Communion, led by Rachael Brooks

Thursday 17th July - 10.00am - St Edmund's Church Hall - Baby & Toddler Group

Friday 18th July - 8.30-10.30am - St Matthew's Fellowship Room - Community Café

Saturday 19th July

10.00am-12 noon - St Matthew's Fellowship Room - Clothes Swap

Sunday 20th July - Trinity 5 (Proper 11)

10.00am - St Edmund's - Morning Prayer (BCP), led by John Rice

10.00am - St Matthew's - Holy Communion, led by Rachael Brooks

6.00pm - St Matthew's - Choral Evensong, led by Clive Lemmon

Tuesday 22nd July

12 noon - St Edmund's Church Hall - Luncheon Club

Wednesday 23rd July - 10.00am - St Edmund's - Holy Communion, led by John Rice

Saturday 26th July - 9.30am - St Matthew's - Churchyard Working Party

9.30-12 noon - St Matthew's carpark - Refills on the Road

Sunday 27th July - Trinity 6 (Proper 12)

10.00am - St Edmund's - Holy Communion, led by Adrian Thorp

10.00am - St Matthew's - All Age Worship, led by Rachael Brooks & the AAW team

6.00pm - St Edmund's - Choral Evensong, led by the Choir

Wednesday 30th July

10.00am - St Edmund's - Holy Communion, led by Phyllis Bainbridge

Do Tell Us of Future Events or Celebrations

PLEASE CONTACT the Parish Administrator, Caroline Audley, with details of future events for them to be included in the Diary Dates:- email: Steds.stmatts@outlook.com or telephone her on 552031 - **NOTE, new office hours & Closed on Tuesdays.**

Office opening hours:-

Monday & Wednesday

9.30am - 3.00pm

Tuesday

Closed

Thursday

11.30am - 3.00pm
(after Baby & Toddler
Group)

Friday

9.30am - 1.00pm

If out of hours please leave a message; the answer phone is checked daily.

Paying for a new heating system

In last month's magazine Paul provided an update on the decisions faced by the PCC on heating the church and hall. The decision to fit new gas boilers in the hall was made at the last PCC meeting, and this is proceeding.

We have commissioned and received a report from B S, Design Services on the options for updating the heating in church. and as expected we are going to have to spend well in excess of £100,000 (or perhaps much more) to get an efficient system. Any new or improved system needs to be sympathetic to appearance of the building and meet the Church of England's requirements for carbon emission reduction. It also needs to recognise how we use the building now and how we might want to alter the internal arrangements to allow us to make more use of it for the congregation and wider community.

There will be other calls on our money as a result of the recent quinquennial inspection.

St Edmunds is very fortunate in having substantial capital reserves, thanks to the generosity of current and previous members of the congregation over many years. On the face of it therefore we can afford to pay for a new heating system from existing funds.

However, we take money from that capital and the interest on the remainder to partly fund our day to day expenses – our income falls short of our spend by about £4,500 per annum (2024 figures). Without the interest from the capital this would rise to over £12,000 per annum, so we need to take necessary steps to 'balance the books.'

Over the next few months, at the same time as planning the above improvements, we will be encouraging everyone to review their current giving to St Edmunds, but it is not too early to start now! Could you increase the amount you give? If you pay income tax, are you sure you are registered for gift aid? Have you considered a legacy to St Edmunds in your will? Let me know if you have any questions about any of these.

Whatever you decide, we are very grateful for all donations made to St Edmunds.

Chris Jack (Parish Treasurer)

St Edmund's Groundforce

St Edmund's Groundforce meets throughout the year to keep the churchyard and hall grounds in good order, usually on the first Saturday in the month. After a break during June, **their next session is on Saturday 5th July**. If you would like to know more please contact Steve Burton on 07914 884197..

Sunday services at St Edmund's in July



Sunday 6th	10 am Morning Prayer
Sunday 13th	10 am Holy Communion 6 pm Choral Evensong
Sunday 20th	10 am Morning Prayer
Sunday 22nd	10 am Holy Communion
Sunday 27th	10 am Choral Evensong

All Welcome

Join us for Holy Communion



Every Wednesday in July
St Edmund's
10am

All welcome

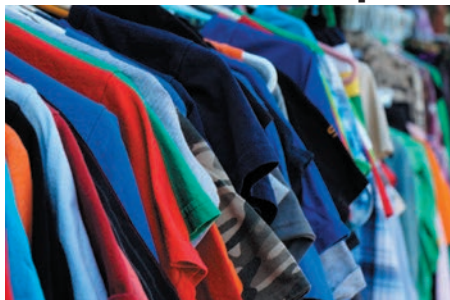
Sunday services at St Matthew's in July



Sunday 6	10 am Holy Communion 6 pm Evensong
Sunday 13	10 am Morning Prayer
Sunday 20	10 am Holy Communion 6 pm Choral Evensong
Sunday 27	10 am All Age Worship

All Welcome

Clothes Swap



Saturday 19th July
10-12 noon
St Matthew's Fellowship Room

*Find items you no longer use and
swap them for new ones*

Book Review

“AGATHA CHRISTIE: A VERY ELUSIVE WOMAN” by Lucy Worsley

Pub Hardback 2022 by Hodder & Stoughton

ISBN 978-1-529303-872

((Also available as a Trade Paperback
and in e-book format)

If ever there were someone who could penetrate the many defences and personas of a subject like Agatha Christie, around whom so many mysteries and untruths have grown up, it is surely Lucy Worsley. Worsley has a great record as an academic historian (“Jane Austen At Home”, “A Very British Murder”), as well as plenty of experience helping history to come to life for TV viewers (“Suffragettes with Lucy Worsley”, for instance). But is this hefty volume worth the read ?



It's certainly varied and full of surprises - one of which is that Christie led an extremely long life, seeing out an Edwardian upbringing, work in two World Wars, two pretty happy marriages, and living to see the mid-1970s as an author still writing almost every day.

One of the biggest surprises is the sheer number of works by Christie. Another is that she was, arguably, equally successful in both detective fiction and the theatre. “The Mousetrap” is her best-known and longest-running play, but how many people have also heard of “And Then There Were None”, “Witness for the Prosecution”, “Appointment With Death” or “The Hollow” ? So, for someone like me who has enjoyed numerous “Poirots” and “Miss Marples”, this theatre dimension is quite enlightening.

This is particularly the case because one of the main clues to Christie's life is not only her staggering work ethic, but also her pleasure in “holding court” in later life as a Grande Dame of assembled friends and remaining relatives. All these folks remember that she was charming, hospitable and full of anecdotes, but virtually never gave away anything about what she was working on (or anything else private, for that matter). She enjoyed nothing better than pretending to be “an ordinary housewife”.

One of the good decisions Worsley makes with this book is to examine Christie's early life in detail. The home where she grew up, “Ashfield” in Torquay, was most

Continued on page 13

Book Review continued

dearly loved, and yet life there contained the beginnings of what is variously called “a dark side” and “shifting sands”. She was encircled with loving care as a youngest child, never had any formal schooling, and loved cream (but detested the smell of milk). Her first exposure to the world of work was as a volunteer nurse at the outbreak of WW1, and her second as a hospital pharmacist not long after. Here she gained, quickly, her comprehensive knowledge of drugs, and particularly from the point of view of her detective fiction multiserries, poisons.

There are so many other facets to this book – Christie’s archaeological expeditions with second husband Max, some of which she financed, the controversy over her alleged anti-Semitism, her moment of triumph at the opening night of one of her later plays, her less than satisfactory mothering of daughter Rosalind, her mysterious ten-day disappearance in 1926, mental illness for a time, money troubles, her retreat into “housewife” mode” – that it’s impossible to do them all justice in a review. Suffice to say that Worsley manages to balance the positive and the more difficult truths with admirable balance (and meticulous research, as is evidenced by her many pages of References and Sources in the final pages).

The writing style is very approachable and unstuffy – it’s clearly a task the author relishes, and this results in a narrative that positively bowls along. The book is fascinating, lively and made an excellent holiday read. A big thank you to the kind neighbour who lent it to me, and I felt sad to have to give it back – warmly recommended.

Kate Smith

Early March 2025

Bookworms Meeting: 14th July '25

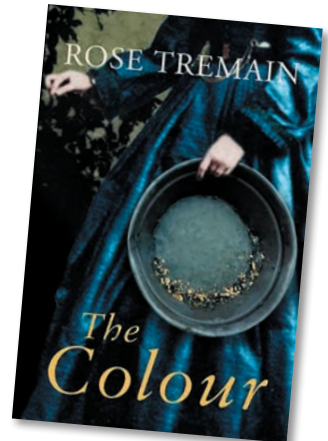
Bookworms meet in St Edmund’s choir vestry once a month on a Monday afternoon at 2.00pm. We will be discussing 'The Colour' by Rose Tremain at our next meeting on Monday 14th July.

The reading list continues:-

11th Aug 2025 Rachel Joyce - The Unlikely
Pilgrimage of Harold Fry

For further details please ring or text Cyra Buxton on 07719 776501 or email her on cyrabuxton@gmail.com.

The new book list will be in next month's magazine.



Afternoon Tea with Miss Austen

Do read the account of the above in Ann Miller's churchwarden's report on pages 4, 5 and 6. I would like to add my thanks to the events committee, friends and families for all their hard work before, during and after the event. We were particularly proud of washing up in the traditional Jane Austen way ie no dishwashers were used, apart from human ones, with the Marigold award going to John Aspinall for his sterling dedication at the sink! There are more photos on the back cover.

Elizabeth Jack



Paying for Your Parish Magazine

Dear people who subscribe to the magazine, your subscriptions are due. The magazine 'year' runs from the 1st July to 30th June in any one year. The cost of the magazine remains at £1 per copy and there are 11 issues, but **if you have the magazine delivered and pay in advance it is £10 per year.** If the magazine is posted to you, you will need to add another £10 for postage and packing.

These are the options for paying your subscriptions:-

1. Bank Transfer to PCC of St Edmund's Allestree.
Sort code 40-52-40 Account No.00032364

This is the Treasurer's preferred option because our bank charges us to process cheques. It is important that a payment is marked with the word "Magazine" and your name.

2. Cheque payable to PCC of St Edmund's Allestree and sent to Mr C Jack, 12 Regency Close, Littleover, Derby DE23 1TR. Again, a note showing your name and address is very helpful in confirming identity.
3. You can put cash into one of the brown envelopes which can be found at the back of the Church, but be sure to write your name and address on the envelope and mark it Parish Magazine money.

Regarding nos 2 and 3, if it is easier for you to put it through my door at 101 Laburnum Crescent, please do so.

Thank you to all of you in anticipation of your response.

Chris W



Community Pop-in Café

Coffee Tea Toast

**Fellowship Room, St Matthew's Church
Darley Abbey**

Friday 18th July 2025 from 8.30am to 10.30am

All welcome - Share time with friends

Some Good Walks Revisited - Panoramic (6)

THE ENVIRONS OF CHAPEL-EN-LE-FRITH

The tiny village of Combs (pronounced Cooms), lying 1½ miles SW of Chapel-en-le-Frith, lends its name to a nearby reservoir and a large block of upland to the south known as Combs Edge; this is the location of Castle Naze, an Iron Age hillfort with impressive views over Chapel and its surroundings. This historic site and another local vantage point, Eccles Pike, are both of modest elevation and accessible by minor roads, which are utilised in a 6½ mile circular walk outlined below, using Combs Reservoir as the base. An optional 1½ mile extension includes the route of the old Peak Forest Tramway.

Chapel-en-le-Frith lies in an area which was part of the Royal Forest of the Peak in medieval times ('frith' meaning forest in Norman-French). Its first chapel, dedicated to St. Thomas-a-Becket, was built for the foresters in 1226 when the estate was held by William de Ferrers, Earl of Derby. The village grew in importance as the Forest Courts or 'Eyres' were frequently held there, and it was granted a market licence in Tudor times. During the Civil War an infamous event occurred involving a Scottish army which had marched south to aid Charles I in 1648.

Following defeat at Preston, some 1500 of their men were brought to Chapel-en-le-Frith and imprisoned by Roundheads for 16 days in the church; and, shamefully, 40 of them died before the survivors were allowed to march back to Scotland.

Another connection with the town is one William Bagshawe, a non-conformist priest known as the 'Apostle of the Peak', who is buried in the church. He had been ejected from his post at Glossop in 1662, but despite an arrest warrant he managed to continue preaching in the area to a growing congregation of dissenters.

Combs Village nestles in the valley between Combs Edge and Ladder Hill. Although originally just a collection of farms, the creation of the nearby London-Manchester railway brought increased employment, as did Combs Reservoir, built to feed the Peak Forest Canal at Whaley Bridge. The village's most famous son was Herbert Frood, who used local water power to create and test his brake lining material for horse-drawn carts.



Castle Naze & Combs Edge



Combs Reservoir

Continued on page 17

Some Good Walks Revisited - Panoramic (6)

In 1902 he moved to Chapel to set up the Ferodo Company which became the world's largest manufacturer of friction linings for motor vehicles (now part of USA giant Federal-Mogul). The **Peak Forest Tramway** route, visited in the walk extension, was built to transport limestone from Doveholes quarries to the canal basin at Buxworth. Many of



Combs Village



Chapel from below Castle Naze

its original stone sleeper blocks are still present underfoot.

Castle Naze, situated at the northern extremity of Combs Edge, is one of the best preserved Iron Age hill forts in the Peak District. Although well-fortified on a crag-encircled triangular promontory, with twin defensive banks on the moorland side, no traces of fighting or weapons have been found. So its purpose remains rather mysterious: considered too small for a permanent settlement, it may well have been a tribal focal point and power symbol. **Eccles Pike**, part-owned by the National Trust, lies 1½ miles west of Chapel ('eccles' effectively meaning 'church'). Although only 1213ft in height, it commands an impressive panorama of the area due to its relative isolation from other high ground. Eccles Road passes near to the summit with a small parking area and a seat with a splendid view. A topograph points out the many surrounding features which include Kinder Scout, Axe Edge and even Greater Manchester.

Reservoir c/p*. Follow the lakeside path SE; at the lake end cross a footbridge R, through a gate, under a railway bridge, then L on the lane into Combs. Pass the Beehive pub and take Dove Holes Lane, winding steeply up towards Combs Edge. When it levels out take a f/p R for the brief climb to Castle Naze site and return. Take the f/p almost opposite, descending to a gateway through Bank Hill Farm and along the access drive. Just past the Lodge swing L under the railway; continue on tarmac under a second bridge to Long Lane. Turn L past a school to reach the B5470. Turn L briefly, then R on Crossings Road

The Route commences from Combs

Some Good Walks Revisited - Panoramic (6)

THE ENVIRONS OF CHAPEL-EN-LE-FRITH continued

for about ½ mile to a minor crossroads; turn L onto Eccles Road, rising gradually along the slopes of Eccles Pike. After visiting the summit, return and continue on the road to a f/p L just past Top o' Eccles Farm; this descends SE, then S via Woodside Farm to the B5470. Cross to a f/p, which leads via the outflow stream and steps back to the reservoir c/p.



Combs Edge

For the Peak Tramway extension, continue past Eccles Rd. above and take the next road R; then, after passing under the A6, turn immediately L onto the old Tramway. Follow the track for 1 mile and turn L at the next road crossing. Continue up towards Whitehough Head and just beyond the A6 bridge turn R on Back Eccles Lane. This rises uphill, swinging L to meet Eccles Road, where a R turn rejoins the main route.

The Rambler

* Take the B5470 from Chapel & turn L about ¼ mile past the Combs Village turn



St Matthew
DARLEY ABBEY

ST EDMUND'S



We collect for the Hope
Centre on the **first**
Sunday of **every** month.
Donations can be left in
St Edmund's Church.
Thank you

OPEN HOUSE COFFEE AT ST. EDMUND'S

Join us for coffee -
everyone welcome.
We'd love to see you!

We serve coffee and biscuits
on Sunday mornings between
11.00am and 11.45am in St
Edmund's Church Hall and
on Wednesday mornings
there's coffee inside the
Church at 10.45am.

Please come and join us

St Edmund's CHOSEN Charities 2025



25 June 2025

Dear Mark,

Thank you so much to everyone at St Edmund's Church Allestree for their generous donation of £550.00. With your group's support, we can continue ensuring everyone, everywhere has a sustainable source of clean water and access to proper hygiene and sanitation.

Until recently, Awa, a mother from Loumana in Burkina Faso, had no access to a toilet. Before, she and her family would have to use a bush to relieve themselves, meaning there was little privacy and safety, and also a lack of proper hygiene.

However, with their support, WaterAid was able to help build a new latrine at her home (pictured below), changing her and her family's lives. Awa was part of a project to improve access to hygiene and sanitation services in her community. Her new latrine was one of around 25,000 latrines that was built in various vulnerable households.

Awa told us about the difference having a latrine has made: "The new latrine we have got now is a relief and a credit to us [...] We have to maintain the latrine and keep our living environment healthy for ourselves." Your group's support is helping mothers like Awa keep their families safe and healthy.

No one person can fix the water crisis alone. But with your group's support, we are one step closer. Together, we can help even more communities like Awa's thrive. We couldn't do it without you. Thank you so much again.



With best wishes,

Emily McGuinness

Community Team - WaterAid | faith@wateraid.org | 020 7793 4594

P.S. If you have any questions, want to find out about other ways to support WaterAid, or wish to stop receiving communications from WaterAid, please don't hesitate to get in touch with our Supporter Care team on 020 7793 4594 or via email at supportercare@wateraid.org



We are determined to make clean water, decent toilets and good hygiene normal for everyone, everywhere within a generation.

6th floor, 20 Canada Square, London E14 5NN | 020 7793 4500 | wateraid.org | wateraid@wateraid.org
Company number: 1787329 | Registration numbers: England/Wales 288701 Scotland SC039479

Diocesan Choral Festival Evensong: Derby Cathedral, 22nd June 2025

Members of both St. Edmund's and St. Matthew's choirs joined with over 100 other singers from 16 churches from across the county to sing at the above event, expertly conducted by Alexander Binns, Director of Music at the cathedral.

The fine acoustic lent itself admirably to massed voices with music by Mrs. H. H. A. Beach, Ayleward, Brewer and Elgar, together with excellent psalm chanting and rousing hymn singing. Bishop Malcolm led us all as we renewed our commitment to ministry at the end of the service.

It was all very hot, hard work but everyone agreed it was a most rewarding afternoon and we all felt hugely privileged to have been part of such a prestigious occasion.

Elizabeth Jack



Musical Evening Success

Members of the High Edge Recorder Orchestra, directed by Eileen Morse, prepare for the concert with Derby City Singers in the hall on 14 June. All proceeds to church funds!

Paul Smith



Allestree W.I. Meeting - 15th July 2025

Allestree W.I. will meet on Tuesday 15th July 2025, 2.00pm at Woodlands Church, Blenheim Drive, Allestree, Derby. DE22 2GP.

The Talk is 'Fundraising for the Neo Natal Baby Unit at the Royal Derby Hospital.' by Mrs. Kate Repton. The Competition is 'An item from my Childhood'

Visitors welcome, £5.00pp. Enquiries to Mavis on 01332 556012.

Save Your Stamps for Charity

We would be most grateful if you could continue to save stamps this year. The Derby Oxfam shop are very grateful for them - AND the stamps are covered by gift aid so the charity gets tax back. The stamps are sorted and sold in the shop so do keep your donations coming!

Please cut stamps leaving a centimetre edge all round and place them in the box at the back of church. *Elizabeth Jack*



St Edmund's Caretaker Celebrates 20+ years

Tony Delaney, our much loved caretaker, receives a certificate of appreciation from Paul. The text reads: this Certificate is awarded to Tony Delaney in grateful thanks for your service to St Edmund's church over many years. The PCC also presented Tony with a Nottingham Forest gift voucher to mark his 20+ years service.



The Repair Café is on an extended summer break

Due to repairs at the West End Community Centre, the volunteer-run Derby Repair Cafe will not be open during July and August. They will return on Saturday 6th September to the West End Community Centre, Mackworth Road, DE22 3BL, and will be open on the first Saturday of every month after that.

Rita's Recipe: Warm Raspberry (or Strawberry) Sauce

Ingredients:

8 ozs raspberries or strawberries, fresh or frozen.

Icing sugar to suit taste.

Method

Simmer fruit gently to soften in 1 to 2 tbsps water. If frozen, defrost first, and add very small amount of water. Add icing sugar to taste for sweetness! Stir over heat till dissolved. Remove from heat, sieve or liquidise or serve whole. Delicious served warm with ice cream. An ideal way to use up over ripe fruit.

A very simple recipe but delicious, and perfect for this hot summer - Enjoy.

Rita Wrigley



Come to 22 Questions on Tuesday, 1st July

A lovely informal opportunity to chat with others about faith. Chris (Dyer) and David host '22 Questions' - a play on the game '20 Questions' (and the fact they live at No 22). The evening starts with coffee and biscuits and then a natter about a broad question with no plan about where we'll end up. From 7.30 until 9.00pm at 22 Phildock Wood Road, DE22 4PH (on Langley Country Park off Radbourne Lane). Everyone welcome.



Darley Abbey Scout Hall Saturday Social on 19th July

At a loose end? Fancy a natter over a cuppa with a piece of Easter cake in a lovely, warm space? Like to play some games or browse our papers and magazines?

Then come along to Darley Abbey Scout Hall (DE22 1DT) on 19th July 2025, 1.30-3.30pm., and join in the fun! This month we are having a talk on Darley Abbey given by Alan Bradwell of the Darley Abbey Historical Group. A good chance to reminisce and share memories. We have a small car park and the Hall is fully accessible to wheelchair and mobile scooter users.

Every third Saturday of the month, free of charge thanks to the Co-op and its customers.



Blacksmith Experience Day

Beginner & advanced classes
The art of blacksmithing with

HAZELL FORGED



Contact Belper Blacksmith Richard Hazell
to arrange your experience day
0753 400 2300
HazellForged@gmail.com

HAZELL FORGED

Hand Forged in Belper

Traditionally Forged Ironwork,
Designed with Thought, Crafted with Care
Belper Blacksmith Richard Hazell
0753 400 2300 HazellForged@gmail.com





W Jones & Son

FUNERAL DIRECTORS

ESTABLISHED 1864

**An independent family funeral business
offering a professional and caring service**

*Pre-arranged funeral plans available
through Ecclesiastical Planning Services*

01335 360319

Main Road, Brailsford, Ashbourne DE6 3DA
E: cwjones600@yahoo.co.uk www.wjonesandson.com

July 2025

Archdeacon Karen writes...

Recently I found myself considering a spoil heap hill (a feature of former coal mining areas) as a metaphor of transformation.

A bit of background to explain that!

As Archdeacon of East Derbyshire the part of my role that involves me travelling throughout the eastern side of the county means that I am frequently driving through settlements and landscapes associated with mining and its legacy. The small hill (and it was big enough to be considered as such) I was driving past at the time is now partially wooded and partially farmed. I'm not sure how long it will have taken to get this 'heap' to this point but it will have been a journey that has involved a great deal of attention and care around stability, drainage, probably some form of reclamation of the material and varying levels of plant and species colonisation, planned and otherwise. It is so much more than a single event!

Many of us are on a journey of transformation as followers of Jesus, as our desire to be more like Him and the work of the Holy Spirit in us combine to spur us on in our pilgrimage. That can take us in a myriad of directions as we follow God's call on our lives, but even as we heed that call, Scripture encourages us to 'go on being transformed', to keep on with the journey of discipleship, to go deeper with God. Others of us may be on a journey of enquiry and exploration, uncertain of where that might lead but still with a desire to find out. That journey is of itself transformative.

For some that has led them recently to Ordination as deacon and priest. Please do hold those people in your prayers as they settle into this new phase of their lives.



For a lot of us it is about 'keeping on keeping on' in our own situations, whatever we do, dealing

with all the joys and challenges of life in the context of ongoing inner transformation as we daily know more of God's love for us. Often challenging, sometimes extremely so, never dull!

For me, as retirement approaches, the transforming love of God and my response to that will continue to transform me, although in a different setting.

This is the last Archdeacon's message I will be writing. Thank you for being part of the journey with me over the years, not just as Archdeacon but prior to that as well. My life has been enriched beyond measure by the people of this Diocese, whether part of a worshipping community or not, whether colleague or companion or passing acquaintance and it has been a joy, sometimes in the midst of struggle, to see God's Kingdom bringing transformation in so many different places and lives in such a variety of ways.

Keep on keeping on, nothing is beyond God's redemptive and transforming presence, as the spoil heap illustrates (just a metaphor, don't push it too far as one of my lecturers used to say). May God's blessing be on you and with you as our journeys of transformation continue.

A handwritten signature in black ink, which appears to read 'K Hamblin'.


The Venerable Karen Hamblin
Archdeacon of East Derbyshire



Come and join us!

SHERWIN SINGERS

We meet most Saturdays at 1:30pm at the
DFWI HQ on Sherwin Street DE22 1GP

 you don't have to be a WI member to join us

 you don't have to be able to read music

 you do have to have fun!!

Contact Diane for more information on - 07496 142721

ADVERTISE IN THIS MAGAZINE

If you are a local trader, or have an event to promote, why not place an advertisement in the St Edmund's Church magazine. It is an inexpensive way to reach the local population of Allestree and Darley Abbey.

Contact Caroline Audley,
parish administrator on email
Steds.stmatts@outlook.com
for details on cost
and publication dates.

ALLESTREE SATELLITE AERIAL SERVICES

**BASED IN ALLESTREE BUT COVERING
ALL AREAS IN DERBY & DERBYSHIRE**

- Professional conscientious Engineer with over 25 years experience
- TV Aerial repairs and installations
- FREEVIEW wideband digital aerials
- FREESAT installations
- SKY installations, dish realignment
- Additional points installed
- Telephone points installed

Call Paul today for a free estimate.

Tel: 07985 405244

email: paulflowersas@aol.com

33 Lockwood Road
Allestree, Derby, DE22 2JD



STEVE FIXES COMPUTERS

Windows 10
End Of Life

WINDOWS 10 IS FINISHING

**Microsoft will stop supporting
Windows 10 from 14 October
2025**

If you currently use Windows 10 on your PC or laptop, please be aware that it will no longer be updated after this date, making you increasing vulnerable to security risks if you continue to use it.

However, don't rush out and buy a new PC/laptop, please contact me instead. In most cases I will be able to upgrade your existing device with Windows 11, plus offer guidance on using it, if required.

Call: **Steve Little** on **07947 868605**
Email: **steve_little@hotmail.com**

SHOW HOME SHUTTERS

Shutters Rollers Romans
Verticals Venetians Vision

**ALL TYPES OF SHUTTERS
HANDMADE CURTAINS
ROMAN BLINDS AND BLINDS
AT AFFORDABLE PRICES**

Battery remote control blinds from only £180

Free fitting on all orders

For a free estimate, please ring Gary

Tel: 01332 205359

Mob: 07962 086864

gary@interioroptions.co.uk

Interior Options, 36-40 The Strand, Derby DE1 1BE

PASSING ON YOUR WEALTH

Leave a lasting legacy that means the world to you



There is more to inheritance than money and property.

Your legacy is as personal as your fingerprint. It extends beyond financial wealth, encompassing everything that defines you – from your core values and vision for the future to the knowledge, wisdom and experience you acquire over your lifetime.

Legacy planning captures all these elements and builds a wealth management strategy around them. Its aim is to give your beneficiaries a clear sense of the direction you would like them to take – so they can keep your legacy alive and aligned with your wishes for generations to come.

Talk to us about family wealth management.



Find out more about
legacy planning

INVESTMENT PLANNING | RETIREMENT PLANNING | LEGACY PLANNING



Tel: 01332 551155
amgwealth.co.uk

Senior Partner Practice of St. James's Place
Park Farm Drive | Allestree | Derby DE22 2QP



AMG Wealth is an Appointed Representative of and represents only St. James's Place Wealth Management plc (which is authorised and regulated by the Financial Conduct Authority) for the purpose of advising solely on the Group's wealth management products and services, more details of which are set out on the Group's website www.sjp.co.uk/products. The 'St. James's Place Partnership' and the titles 'Partner' and 'Partner Practice' are marketing terms used to describe St. James's Place representatives. AMG Wealth is a trading name of AMG Wealth Management Ltd.

SJP Approved 13/3/2025

Holbrook Hall

Private Residential Home for the Elderly



Holbrook Hall conforms to the highest standards of safety and comfort and has a well deserved reputation for its superb level of care and cuisine.

Short and long-stay residents welcome.

For further information please telephone 01332 880698
or visit our website www.holbrookhall.co.uk

Holbrook Hall, Holbrook, Derbyshire DE56 0TF

J BARLOW & FAMILY

Funeral Service



**A truly independent, award winning,
family-run funeral directors committed to providing you with the
highest level of service.**

**Our commitment is to you and your family by providing a
personal service in your hour of need. Together we will provide a
professional and dignified funeral service that will also be unique
and personal and we will guide you every step of the way. We
will listen carefully to your family wishes and offer a complete
choice and flexibility in the arrangements.**



Direct cremation Bespoke Funerals Pre-paid Celebration of life

Here for you every step of the way

01332 409182

41 Park Farm Centre
Park Farm Drive
Allestree

www.ibarlowfuneralservice.co.uk





The Family Funeral Service®



Greg Martin - Funeral Arranger

Experts in Funeral Care for Nearly 120 Years

For generations we have provided exceptional funeral services with professionalism, compassion and attention to detail.

As a family-run business with nearly 120 years of experience, we understand the importance of dignity, respect, and personal care at every step.

- ✓ Trusted Expertise
- ✓ Unmatched Service
- ✓ Family Values

Here for you, whenever you need us.

Derby

Derwent House, 9 Becket Street, DE1 1HT

01332 348 800

derby@lymn.co.uk

www.lymn.co.uk [f /awlymn](https://www.facebook.com/awlymn) [ig /a.w.lymn](https://www.instagram.com/awlymn)

"Our family serving your family since 1907"

Richard Hill Interior/Exterior Decorator

City & Guilds advanced qualified
with 30 years' experience
Reasonable rates



For free estimate ring
Richard on 01332 780907
or 079220 90066 or email
richard.dhill@hotmail.com

TRUSTED TRADER



STEVE FIXES COMPUTERS

STEVE CAN FIX & SERVICE YOUR PC, LAPTOP, TABLET, PHONE

*Running slow? *Stopped working? *Can't get online?
* Issues with emails, broadband, printing, setting up, installing/using apps?

DON'T PANIC!!

I'm in Belper and can come to you.
All surrounding areas too!

STEVE CAN GIVE YOU TUITION

- *Want to learn how to use or do something on your PC/ laptop?
- *Need help with your phone/ tablet/ iPad?

Plus:- Affordable WEBSITES created
VIDEOS transferred to DVD

Call: **Steve Little** on **07947 868605**
Email: steve_little@hotmail.com

St. Edmund's Parish

Church Website: stedsandstmatts.co.uk

For all enquiries regarding weddings, baptisms, funerals and parish events contact the Parish Administrator, Caroline Audley: email: Steds.stmatts@outlook.com / telephone 552031.

Office opening hours:- Monday, Wednesday & Friday: 9.30am – 3.00pm
Thursday: 11.30am – 3.00pm The office is closed on Tuesday

If out of hours please leave a message; the answer phone is checked daily.

In an emergency, please contact one of the churchwardens.

Directory

Associate Minister:	Revd Rachael Brooks: rev.rachaelbrooks@gmail.com	07305 140573
Churchwardens:	Paul Smith	07792 569758
	Ann Miller	07831 506978
Parish Administrator:	Caroline Audley: Steds.stmatts@outlook.com	552031
Readers:	<i>Vacancies</i>	
Choir:	Elizabeth Jack	07779 255412
Treasurer/Gift Aid Sec.:	Chris Jack, 12 Regency Close, Littleover	07805 027515
PCC Correspondence Sec:	<i>Vacancy</i>	
Electoral Roll:	Matt Cooper	07572 110185
Flower Group:	Rosemary Yates	552742
	Pam Highman	551636
	Michèle Aspinall	07773 784009
Luncheon Club:	Anne Madge	07971 680377
Baby and Toddler Group:	Caroline Audley: Steds.stmatts@outlook.com	552031
Parish Safeguarding Links	Madeleine Fullerton	554762
	Louise Whittaker	556455
<hr/>		
Hall Bookings:	Caroline Audley - Steds.stmatts@outlook.com	552031
Handbells:	Gill Flatman	557028
St Edmund's Preschool		
CIC:	Becky Radford admin@stedmundspreschool.org for enquiries	07934 380561
Brownies:	Alwyn Young	07740 201963

St. Edmund's Parish Magazine Editorial Team: Chris Willis, Claire Pegg and Fiona Fraser.

Please EMAIL magazine articles and photos to both fiona.fraser@burnsgraphics.co.uk and Chris Willis at c.willis246@btinternet.com

Magazine Distribution: Chris Willis 558136

Copy Deadlines: 20 July for the August issue and 20 August for the September issue.

Our Parish magazines are available as printed copies in Church and digitally on the website:-
www.stedsandstmatts.co.uk.

Afternoon Tea with Miss Austen - 21st June 2025

See pages 4, 5 and 14

